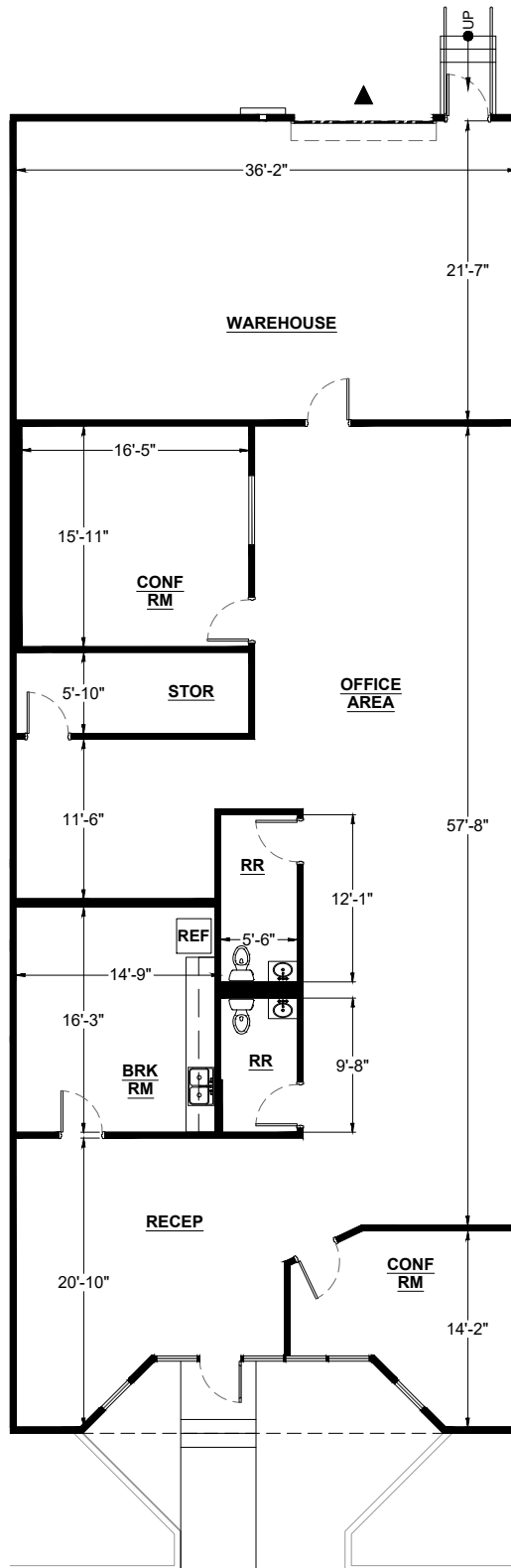
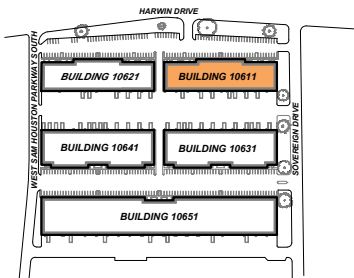


SUITE DATA:

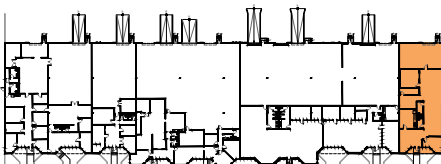
| | |
|-------------------|-----------------|
| OFFICE | 2,683 SF |
| WAREHOUSE | 819 SF |
| TOTAL | 3,502 SF |
| | |
| CLEAR HEIGHT | 15'-6" |
| ▲ DOCK HIGH DOORS | 1 |



SITE KEY PLAN:



BUILDING KEY PLAN:



West Belt Business Park

10611 Harwin Dr
Houston, TX 77036

Bldg. 10611
STE 400

01/06/25