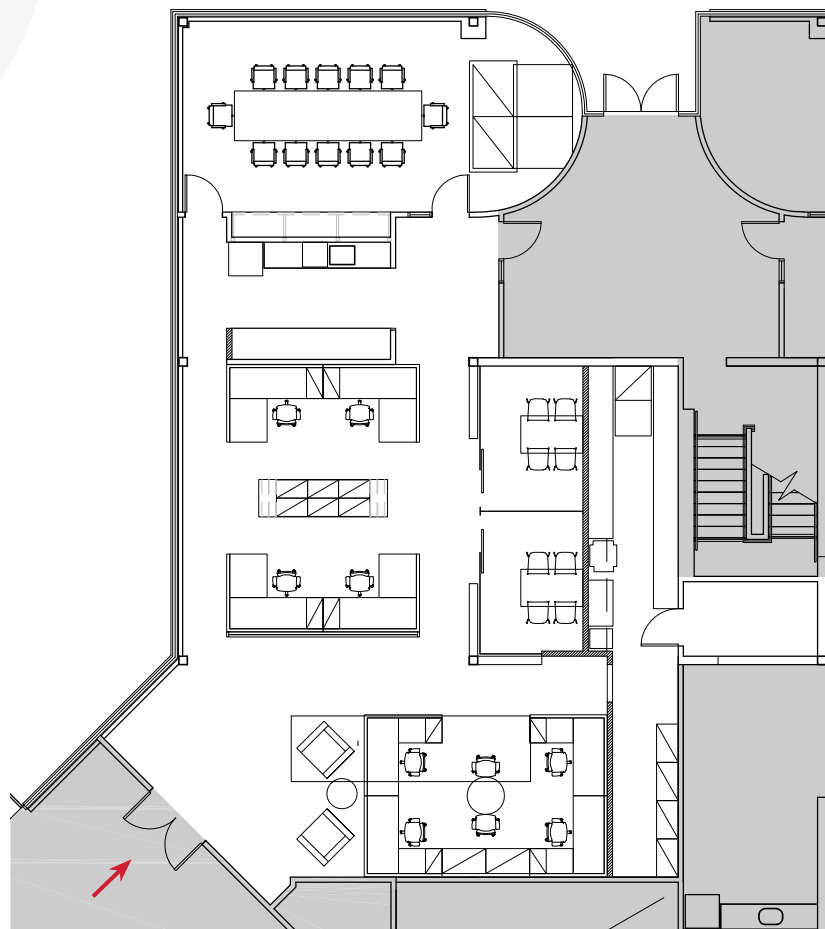


## BUILDING 4400 - SUITE 100 - **PLUG AND PLAY OFFICE SPACE**

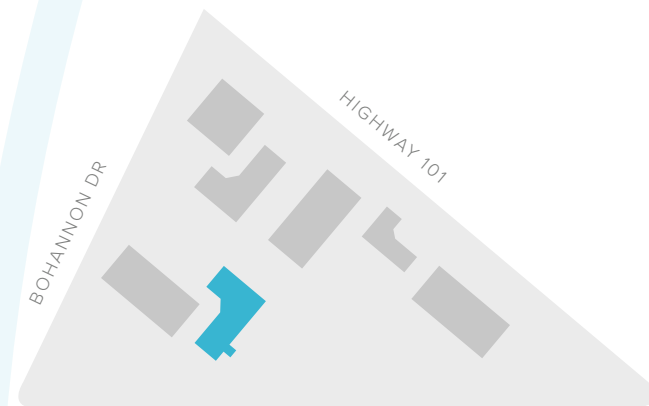
~3,068 RSF

### SUITE HIGHLIGHTS

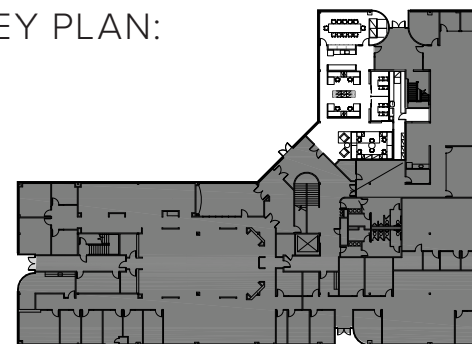
- 8 Work Stations
- 2 Private Offices
- 1 Conference Room
- 1 Storage Room
- Break Area
- Reception



SITE PLAN:



KEY PLAN:



**BEN PAUL** | Vice Chairman | +1 650 401 2123 | [ben.paul@cushwake.com](mailto:ben.paul@cushwake.com) | LIC #0121087

**GARY BOITANO** | Managing Director | +1 650 401 2122 | [gary.boitano@cushwake.com](mailto:gary.boitano@cushwake.com) | LIC #01902693

**DAVID HIEBERT** | Vice Chairman | +1 650 320 0250 | [david.hiebert@cushwake.com](mailto:david.hiebert@cushwake.com) | LIC #01189320