

TIMBERLINE

675-685 E MIDDLEFIELD AVE | MOUNTAIN VIEW, CA



where big ideas
take root



**CUSHMAN &
WAKEFIELD**



**HARVEST
PROPERTIES**

TIMBERLINE

where it all begins

Located within the heart of the iconic Mountain View tech community, Timberline sits just steps from where the industry's biggest innovators made computer science history, including the invention of the world's first semiconductor chip and Intel 4004, the first commercially available microprocessor.

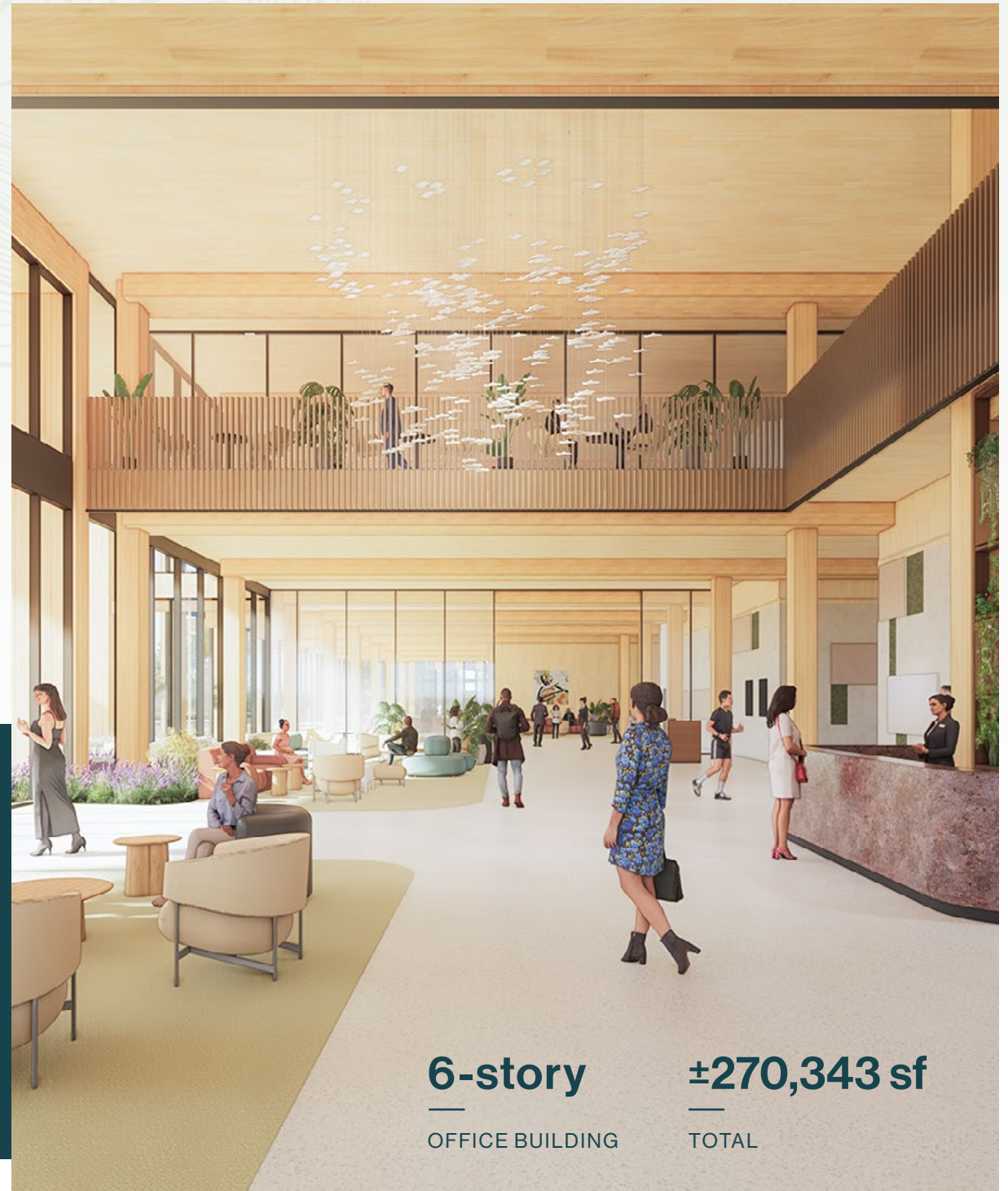
PART OF A NEW MIXED-USE COMMUNITY

- 800+ UNITS OF HOUSING
- MIDDLEFIELD PARK

A new, highly activated, ½ acre park steps from Timberline

- LINEAR PARK

A new ¼ mile long meandering path and breakout spaces spanning from Timberline to Ferguson Drive



6-story

OFFICE BUILDING

±270,343 sf

TOTAL



pushing the boundaries of sustainable design

One of the first mass timber buildings in Mountain View, Timberline features beautiful wood interiors and flexible indoor/outdoor spaces designed to help inspire ideation and empower tech professionals within an innovative, unconventional environment.

6-STORY
OFFICE BUILDING

±270,343 TOTAL
SQUARE FEET

±47,000 SF
FLOOR PLATES

13'-4" FLOOR-TO-FLOOR
HEIGHTS ON UPPER FLOORS

EXPOSED TIMBER CEILINGS,
BEAMS, AND COLUMNS

PRIVATE OUTDOOR TERRACES
ON MOST FLOORS

- Raised access floor offers maximum flexibility and hides MEP systems
- ±17' ground floor clear height
- Prominent building signage with high visibility
- 3-minute walk from VTA station
- Two loading dock bays providing easy access for deliveries and shipments
- Secure bike storage and showers
- 2.9/1,000 SF parking ratio
- Adjacent standalone parking garage

beyond sustainability

Mass timber materials present benefits far beyond construction efficiencies, environmental impacts and sustainable design. The biophilic design of cross-laminated timber (CLT) structures creates an atmosphere that offers a host of advantages that contribute to the health, wellness and well-being of employees.

- Smaller carbon footprint
- Biophilic design reduces stress and lowers blood pressure
- Better indoor air quality and acoustics
- Improved concentration and enhanced creativity
- Improved well-being translates into higher job satisfaction and productivity and better talent retention

test fit

300 DESKS

CONFERENCE ROOMS: 9 LARGE
34 MEDIUM
12 SMALL



*Sample test-fit subject to change

FIRST FLOOR

35,171 SF

±4,570 SF

THE RISE ground floor

SECOND FLOOR

47,290 SF

±3,200 SF

THE RISE terrace

THIRD FLOOR

43,893 SF

±2,600 SF terrace

FOURTH FLOOR

47,198 SF

FIFTH FLOOR

49,593 SF

±2,570 SF terrace

SIXTH FLOOR

47,198 SF

±2,260 SF terrace

TIMBERLINE

2028

CONSTRUCTION START

2029

READY FOR TENANT
IMPROVEMENTS

2030

EXPECTED OCCUPANCY



the Rise

An inspiring outdoor oasis exclusively for tenants, The Rise offers the perfect setting to host all-hands meetings, team events, or casual happy hours, giving your team the opportunity to connect and collaborate in a refreshing, open-air environment that boosts creativity and well-being.





TIMBERLINE

RESIDENTIAL
±800 UNITS

LINEAR PARK

TIMBERLINE PARKING
ADJACENT STANDALONE
PARKING GARAGE

THE RISE

MIDDLEFIELD
PARK

FRAGRANCE
GARDEN

a master plan
rooted in nature & community

Where nature and innovation grow side by side, parks, outdoor collaboration areas, and a fragrance garden foster a vibrant, connected community for living, working, and gathering.

TIMBERLINE

seamlessly
connected to
silicon valley

From the heart of Silicon Valley, Timberline offers remarkable access to the nation's most illustrious tech workforce and talent pipeline, while seamlessly connecting tenants to key regional destinations and opportunities to make their mark on the industry.

1 min drive

SR-237
US-101
SR-85

5 min drive

DOWNTOWN
MOUNTAIN VIEW

12 min drive

SAN JOSE MINETA
INTERNATIONAL
AIRPORT

3 min walk

MIDDLEFIELD
LIGHT RAIL

15 min bike

MOUNTAIN VIEW
CALTRAIN STATION

30 min drive

SAN FRANCISCO
INTERNATIONAL
AIRPORT



○ VTA
LIGHT RAIL

||| CALTRAIN

○ MVGO
SHUTTLE

🚆 VTA LIGHT RAIL

TIMBERLINE

a retreat from the ordinary



Take lunch outside in the fragrance garden



Commute via the Middlefield Light Rail Station with a short 3-minute walk



Enjoy a quick, 15-min bike ride to Downtown Mountain View

Utilize open floor plans to jump into impromptu brainstorm



TIMBERLINE

Brandon Bain

+1 408 615 3416
brandon.bain@cushwake.com
LIC #01308375

David Hiebert

+1 650 320 0250
david.hiebert@cushwake.com
LIC #01189320

Kelly Yoder

+1 408 615 3427
kelly.yoder@cushwake.com
LIC #01821117

Steve Horton

+1 408 615 3412
steve.horton@cushwake.com
LIC #01127340



©2025 Cushman & Wakefield. All rights reserved. The information contained in this communication is strictly confidential. This information has been obtained from sources believed to be reliable but has not been verified. NO WARRANTY OR REPRESENTATION, EXPRESS OR IMPLIED, IS MADE AS TO THE CONDITION OF THE PROPERTY (OR PROPERTIES) REFERENCED HEREIN OR AS TO THE ACCURACY OR COMPLETENESS OF THE INFORMATION CONTAINED HEREIN, AND SAME IS SUBMITTED SUBJECT TO ERRORS, OMISSIONS, CHANGE OF PRICE, RENTAL OR OTHER CONDITIONS, WITHDRAWAL WITHOUT NOTICE, AND TO ANY SPECIAL LISTING CONDITIONS IMPOSED BY THE PROPERTY OWNER(S). ANY PROJECTIONS, OPINIONS OR ESTIMATES ARE SUBJECT TO UNCERTAINTY AND DO NOT SIGNIFY CURRENT OR FUTURE PROPERTY PERFORMANCE. COE-PM-West-12.22.2025

