



SOUTH FLORIDA
GATEWAY

DISTRIBUTION CENTER

2400 - 2450 SW Gateway Place, Stuart, Florida 34997



50,000 - 701,674 SF
AVAILABLE FOR LEASE





SOUTH FLORIDA GATEWAY DISTRIBUTION CENTER



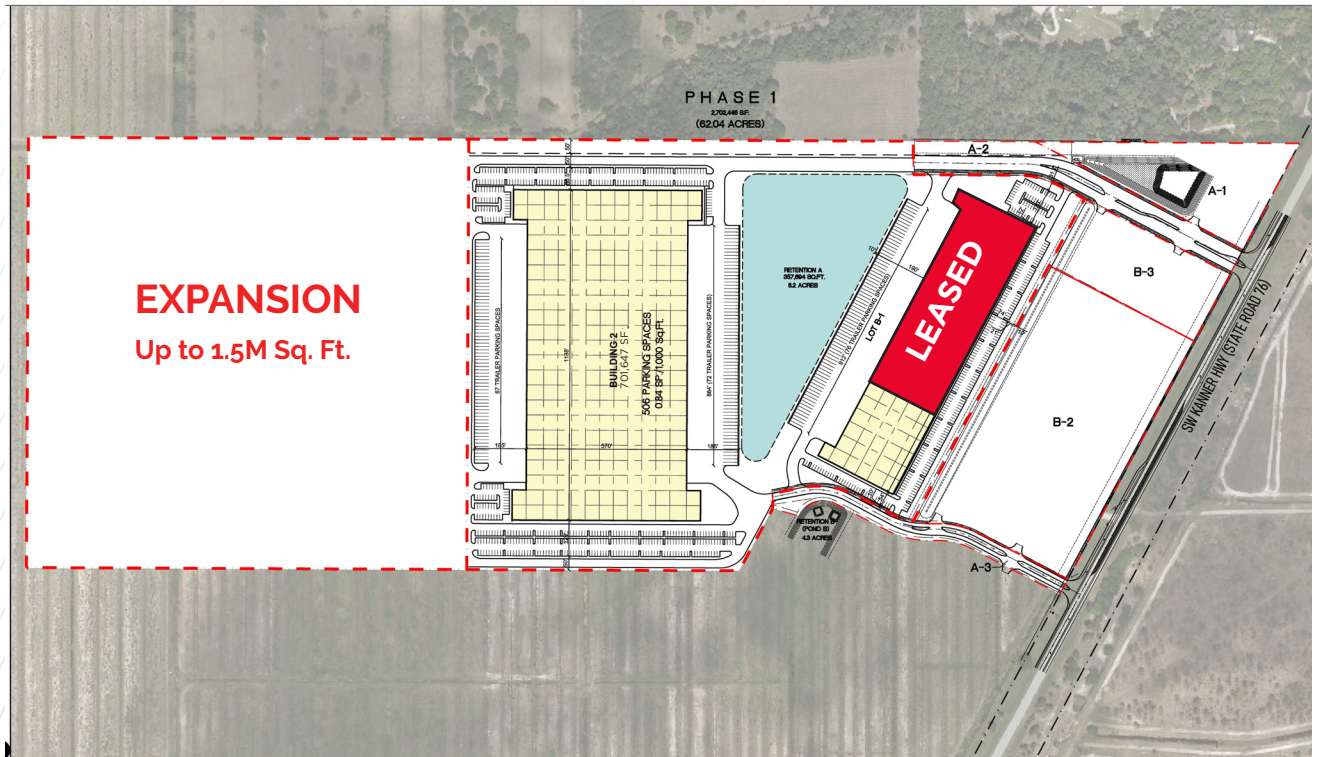
LOGISTICAL ADVANTAGES COMPARED TO OTHER NORTHERN INDUSTRIAL SITES:

LEASED

- At least 1.5 miles closer to Florida's Turnpike than competitive properties
- Second shortest drive time (4 minutes) to I-95 among competitive properties
- Less than 30 minutes from center of Palm Beach County, compared to 40+ minutes for competitive properties
- Overall better access to South Florida MSA

BUILDING FEATURES

CEILING HEIGHT	Building 1 - 32', Building 2 - 36'
PARKING	1:1,000 SF
BUILDING TYPE	Building 1 - Rearload Building 2 - Crossdock
CONSTRUCTION	Tiltwall
FLOOR SLAB	Building 1: 6" concrete floor slab; 4,000 PSI Building 2: 7" concrete floor slab; 4,000 PSI
DOCK HIGH DOORS	Four 9' x 10' per bay
TYPICAL BAY SIZE	54' x 50'
RAMP DOORS	Two (2) drive-in oversized doors (12' x 14'); one at each end of the building
FIRE PROTECTION	ESFR
WAREHOUSE LIGHTING	T5 with motion sensors
ADDITIONAL TRAILER PARKING	Building 1 - 76 Stalls, Building 2 - 139 Stalls





SOUTH FLORIDA
GATEWAY
DISTRIBUTION CENTER

2450 SW Gateway Place, Stuart, FL

BUILDING 1 - 285,510 TOTAL SQUARE FEET

AVAILABILITY	40,000 SF - 100,580 SF
PARKING	1:1,000 SF with 76 trailer stalls overflow parking
BUILDING TYPE	Rearload with Tiltwall Construction
CEILING HEIGHT	32' clear
LOT SIZE	17.29 AC
FLOOR SLAB	6" concrete floor slab; 4,000 PSI
LOADING	60 Dock High Doors 2 Drive-In Ramps
TYPICAL BAY SIZE	54' x 260' = Approximately 14,040 SF Per Bay
FIRE PROTECTION	ESFR
WAREHOUSE LIGHTING	LED
BUILDING DEPTH	260'
ELECTRICAL SERVICE	1,600 amps at 480 volts / 3-phase



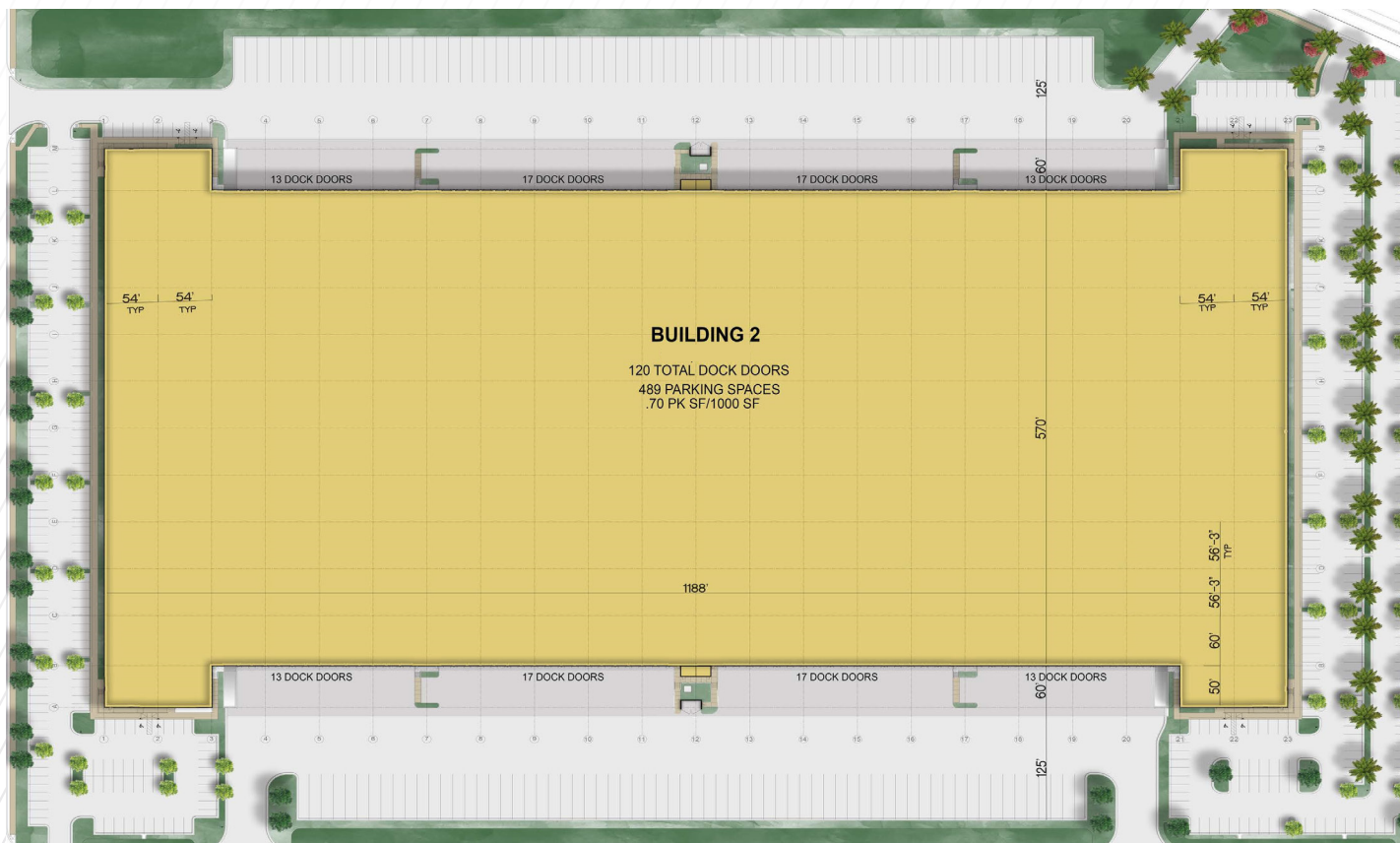


SOUTH FLORIDA
GATEWAY
DISTRIBUTION CENTER

2400 SW Gateway Place, Stuart, FL

BUILDING 2 - 701,674 TOTAL SQUARE FEET

AVAILABILITY	200,000 SF - 701,674 SF
PARKING	0.84:1,000 SF with 139 trailer stalls overflow parking
BUILDING TYPE	Crossdock with Tiltwall Construction
CEILING HEIGHT	36' clear
FLOOR SLAB	7" concrete floor slab; 4,000 PSI
LOADING	120 Dock High Doors 4 Drive-In Ramps
TYPICAL BAY SIZE	54' x 570' = Approximately 30,780 SF Per Bay
FIRE PROTECTION	ESFR
WAREHOUSE LIGHTING	LED
BUILDING DEPTH	570'
ELECTRICAL SERVICE	1,600 amps at 480 volts / 3-phase



LOCATION HIGHLIGHTS

Centrally located in southeast Florida, Martin County is close to Florida's Turnpike and Interstate 95. The county is also midway between Miami and Orlando, offering the ability to reach more than 6 million customers in less than two hours.

AIR:

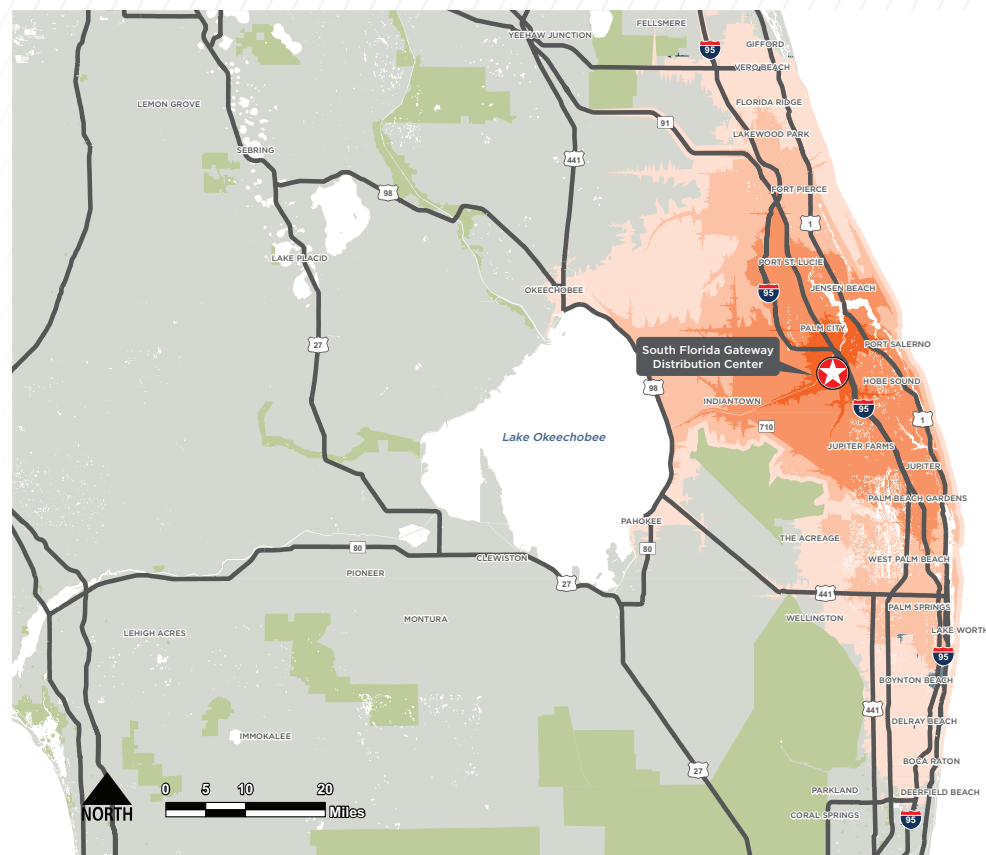
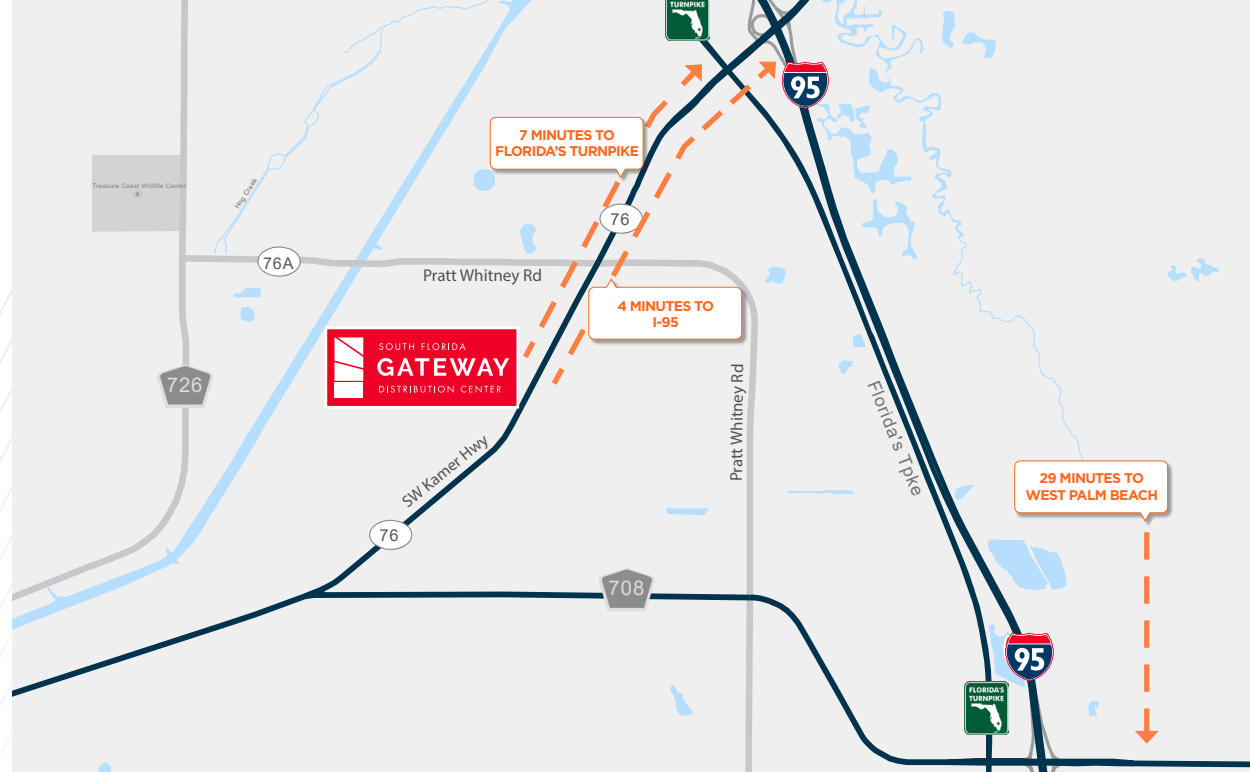
Martin County is located within a two-hour drive of six major international airports in Florida:

- **Palm Beach Airport** (38 Min | 35.3 Miles)
- **St. Lucie Airport** (24 miles North)
- **Fort Lauderdale-Hollywood Airport** (1 hr 25 Min | 81.8 Miles)
- **Melbourne Airport** (70 miles North)
- **Miami Airport** (89 miles South)
- **Orlando Airport** (125 miles Northwest)
- Executives enjoy the convenience of Stuart's own Witham Field, a general aviation airport located in the heart of Martin County FL.
- **Port of Palm Beach** (40 Min | 30.7 Miles)
- **Port Everglades** (1 hr 22 Min | 80.6 Miles)
- **Port of Miami** (1 hr 40 Min | 102 Miles)
- **Port Canaveral** (1 hr 44 Min | 121 Miles)

SOURCE: bdbmc.org

DEMOGRAPHICS

	15 Min.	30 Min.	45 Min.	60 Min.
Total Population	65,732	561,863	1,269,183	2,004,644
Workforce Potential (+16)	31,419	269,828	612,742	942,727
High School Education (Pop. 25+)	10,274 (20.7%)	91,723 (21.7%)	220,131 (23.8%)	340,411 (22.9%)
Blue Collar/ Service Workers	5,260 (18%)	42,870 (17.2%)	113,280 (20.2%)	159,491 (18.5%)





SOUTH FLORIDA
GATEWAY
DISTRIBUTION CENTER

2400 & 2450 SW Gateway Place, Stuart, Florida 34997



**CUSHMAN &
WAKEFIELD**

MATTHEW G. MCALLISTER, SIOR
Managing Director
+1 561 227 2018
matthew.mcallister@cushwake.com

CUSHMAN & WAKEFIELD OF FLORIDA, LLC
225 NE Mizner Boulevard, Suite 300
Boca Raton, FL 33432 | USA

cushmanwakefield.com

FOUNDRY
COMMERCIAL

STOCKBRIDGE

©2021 Cushman & Wakefield.
The material in this presentation has been prepared solely for information purposes, and is strictly confidential. Any disclosure, use, copying or circulation of this presentation (or the information contained within it) is strictly prohibited, unless you have obtained Cushman & Wakefield's prior written consent. The views expressed in this presentation are the views of the author and do not necessarily reflect the views of Cushman & Wakefield. Neither this presentation nor any part of it shall form the basis of, or be relied upon in connection with any offer, or act as an inducement to enter into any contract or commitment whatsoever. NO REPRESENTATION OR WARRANTY IS GIVEN, EXPRESS OR IMPLIED, AS TO THE ACCURACY OF THE INFORMATION CONTAINED WITHIN THIS PRESENTATION, AND CUSHMAN & WAKEFIELD IS UNDER NO OBLIGATION TO SUBSEQUENTLY CORRECT IT IN THE EVENT OF ERRORS.

