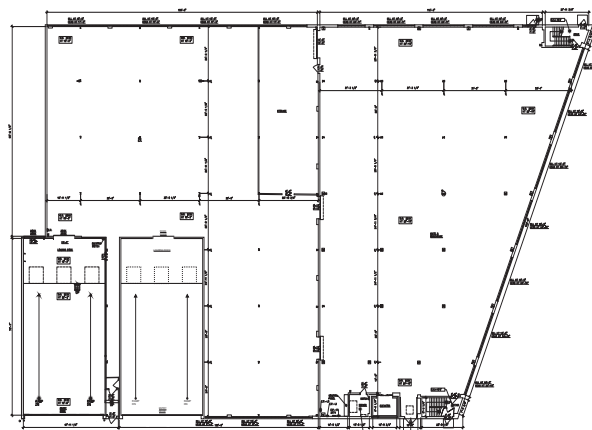


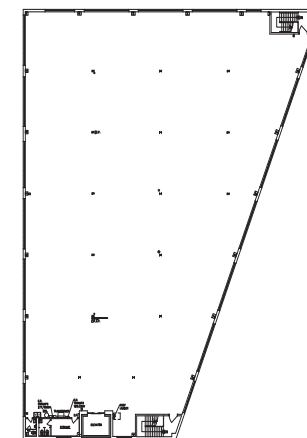
95 INIP DRIVE INWOOD LOGISTICS CENTER



GROUND FLOOR



SECOND FLOOR



95 INIP DRIVE

BUILDING SIZE:	137,390 SF
AVAILABLE WAREHOUSE:	45,437 SF Ground 18,000 SF 2nd Floor
AVAILABLE LAND:	8,000 SF
CEILING HEIGHT:	15'5" - 24'
LOADING DOCKS:	3 Docks
DRIVE-IN DOORS:	1 Drive-in
COLUMN SPACING:	30' x 25'
POWER:	800 Amps
OCCUPANCY:	Immediate

