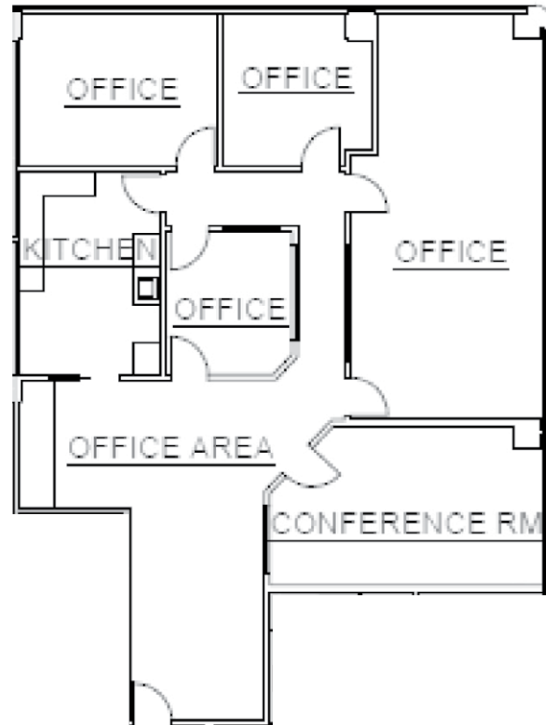


# Suite 1150

Square Feet: ±2,270

915 L Street, Sacramento, CA



CAPITOL  
PLACE

## KEVIN PARTINGTON

Executive Managing Director  
License #01199010  
+1 916 288 4807  
kevin.partington@cushwake.com

## SEAN MULLEN

Managing Director  
License #01845406  
+1 916 288 4811  
sean.mullen@cushwake.com

## LUCAS LUGO

Managing Director  
License #01916673  
+1 916 288 4430  
lucas.lugo@cushwake.com

## KEVIN GOLDTHWAITE

Director  
License #01911862  
+1 916 403 1818  
kevin.goldthwaite@cushwake.com

## JANA EFSTRATIS

Senior Marketing Specialist  
License #01474196  
+1 916 288 4819  
jana.efstratis@cushwake.com



©2026 Cushman & Wakefield. All rights reserved. The information contained in this communication is strictly confidential. This information has been obtained from sources believed to be reliable but has not been verified. NO WARRANTY OR REPRESENTATION, EXPRESS OR IMPLIED, IS MADE AS TO THE CONDITION OF THE PROPERTY (OR PROPERTIES) REFERENCED HEREIN OR AS TO THE ACCURACY OR COMPLETENESS OF THE INFORMATION CONTAINED HEREIN, AND SAME IS SUBMITTED SUBJECT TO ERRORS, OMISSIONS, CHANGE OF PRICE, RENTAL OR OTHER CONDITIONS, WITHDRAWAL WITHOUT NOTICE, AND TO ANY SPECIAL LISTING CONDITIONS IMPOSED BY THE PROPERTY OWNER(S). ANY PROJECTIONS, OPINIONS OR ESTIMATES ARE SUBJECT TO UNCERTAINTY AND DO NOT SIGNIFY CURRENT OR FUTURE PROPERTY PERFORMANCE.  
COE-PM-West-01.14.2026