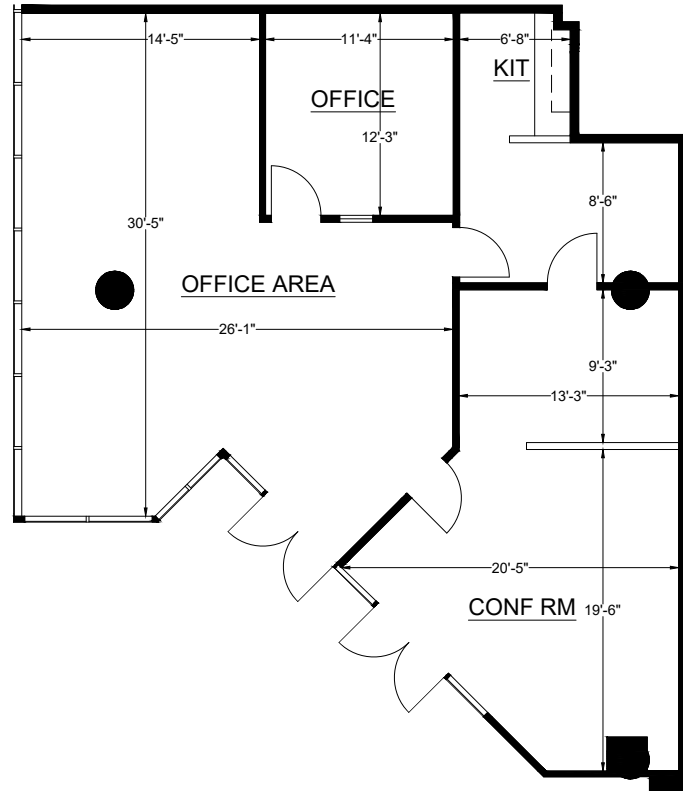


Suite 110

Square Feet: ±1,713

915 L Street, Sacramento, CA



CAPITOL
PLACE

KEVIN PARTINGTON
Executive Managing Director
License #01199010
+1 916 288 4807
kevin.partington@cushwake.com

SEAN MULLEN
Managing Director
License #01845406
+1 916 288 4811
sean.mullen@cushwake.com

LUCAS LUGO
Managing Director
License #01916673
+1 916 288 4430
lucas.lugo@cushwake.com

KEVIN GOLDTHWAITE
Director
License #01911862
+1 916 403 1818
kevin.goldthwaite@cushwake.com

JANA EFSTRATIS
Senior Marketing Specialist
License #01474196
+1 916 288 4819
jana.efstratis@cushwake.com



©2026 Cushman & Wakefield. All rights reserved. The information contained in this communication is strictly confidential. This information has been obtained from sources believed to be reliable but has not been verified. NO WARRANTY OR REPRESENTATION, EXPRESS OR IMPLIED, IS MADE AS TO THE CONDITION OF THE PROPERTY (OR PROPERTIES) REFERENCED HEREIN OR AS TO THE ACCURACY OR COMPLETENESS OF THE INFORMATION CONTAINED HEREIN, AND SAME IS SUBMITTED SUBJECT TO ERRORS, OMISSIONS, CHANGE OF PRICE, RENTAL OR OTHER CONDITIONS, WITHDRAWAL WITHOUT NOTICE, AND TO ANY SPECIAL LISTING CONDITIONS IMPOSED BY THE PROPERTY OWNER(S). ANY PROJECTIONS, OPINIONS OR ESTIMATES ARE SUBJECT TO UNCERTAINTY AND DO NOT SIGNIFY CURRENT OR FUTURE PROPERTY PERFORMANCE.
COE-PM-West-01.14.2026