



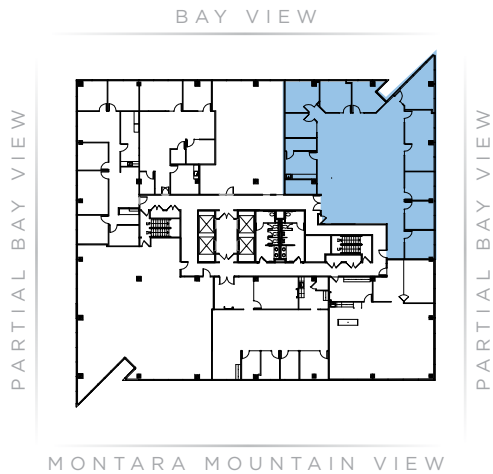
ONE BAY

AVAILABLE

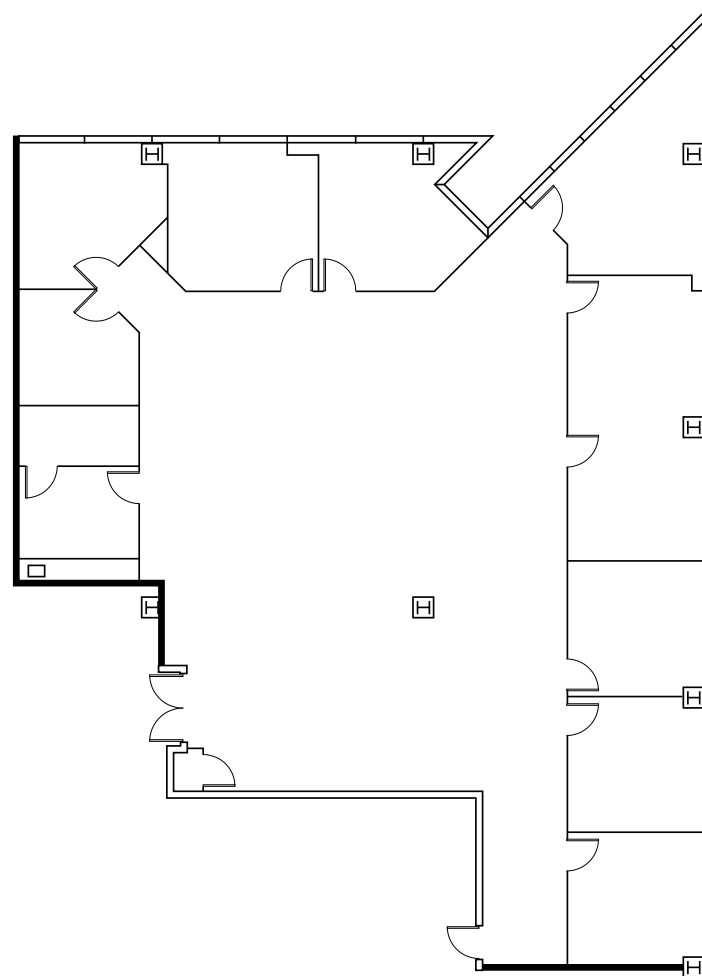
Suite 450 ±5,008 RSF

- 7 Private Office
- 2 Conference Rooms
- 1 Break Room
- Server room
- Bay Views

Available July 1, 2026



BAY VIEW



PARTIAL BAY VIEW

Gary Boitano / Executive Director / T+ 1 650 401 2122 / gary.boitano@cushwake.com

Clarke Funkhouser / Senior Managing Director / T+ 1 650 619 5579 / clarke.funkhouser@jll.com

Nick Waldsmith / Director / T+ 1 650 320 0244 / nick.waldsmith@cushwake.com



CUSHMAN & WAKEFIELD



WOODSTOCK