

HAMMOND

BUSINESS PARK

8, 10, & 12 HAMMOND | IRVINE SPECTRUM, CA 92618

8 Hammond

CONDOMINIUM UNITS FOR SALE

INDUSTRIAL UNIT SIZES FROM

1,442 SF TO 3,201 SF

A QUALITY DEVELOPMENT BY:



HAMMONDBUSINESSPARK.COM

HAMMOND

BUSINESS PARK

PROPERTY DESCRIPTION

The Hammond Business Park is a condominium for sale project, consisting of 22-units with individual entrance and identity, located in the Irvine Spectrum. The project benefits from outstanding South Orange County location, first-class image, personal loading, and abundance of surface parking.

Project Size: 41,943 SF

No. of Available Units: 22

Unit Size Range: 1,442 SF to 3,201 SF

Clear Height: 14' Warehouse Clearance

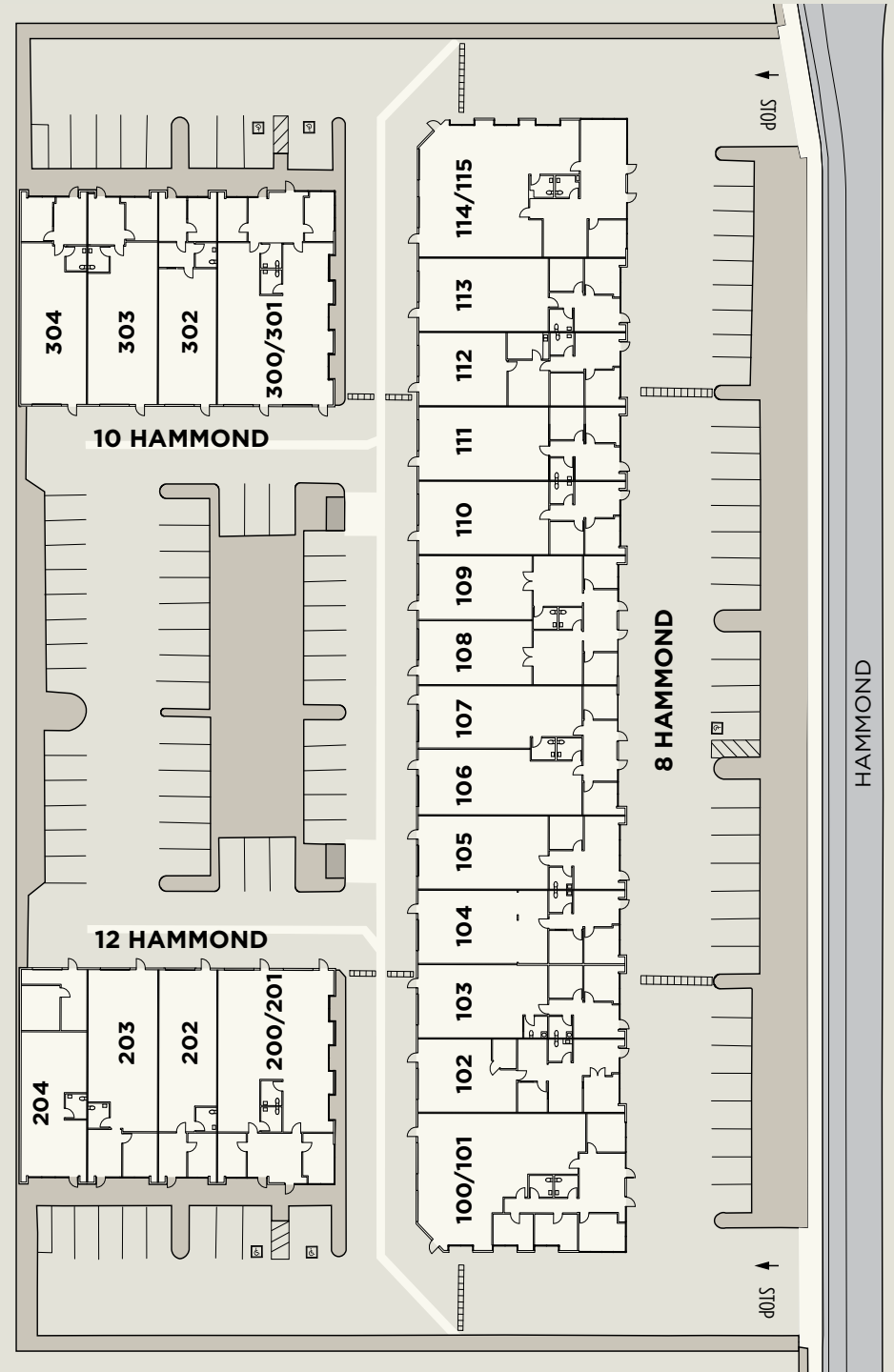
Loading: Grade Level Loading

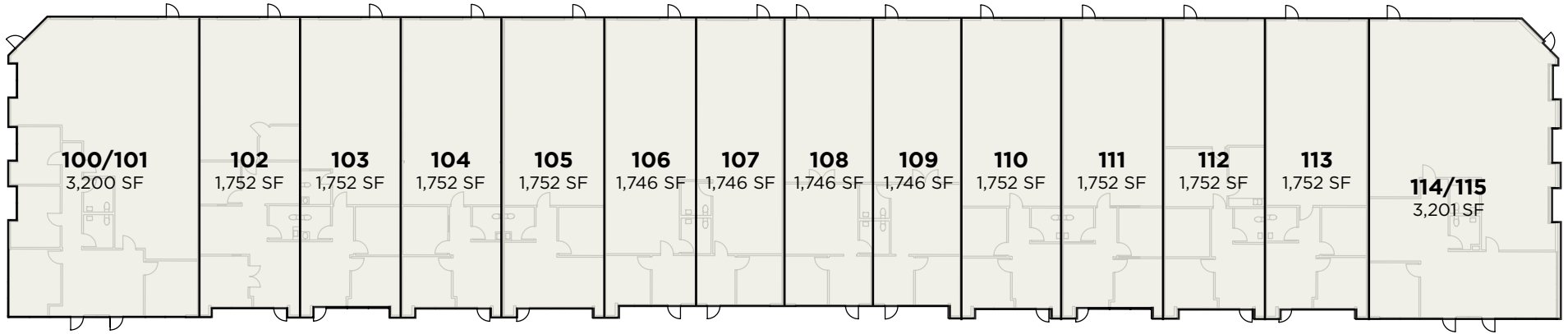
Parking: ±2.6:1000

Power: 100 Amps, Separately Metered

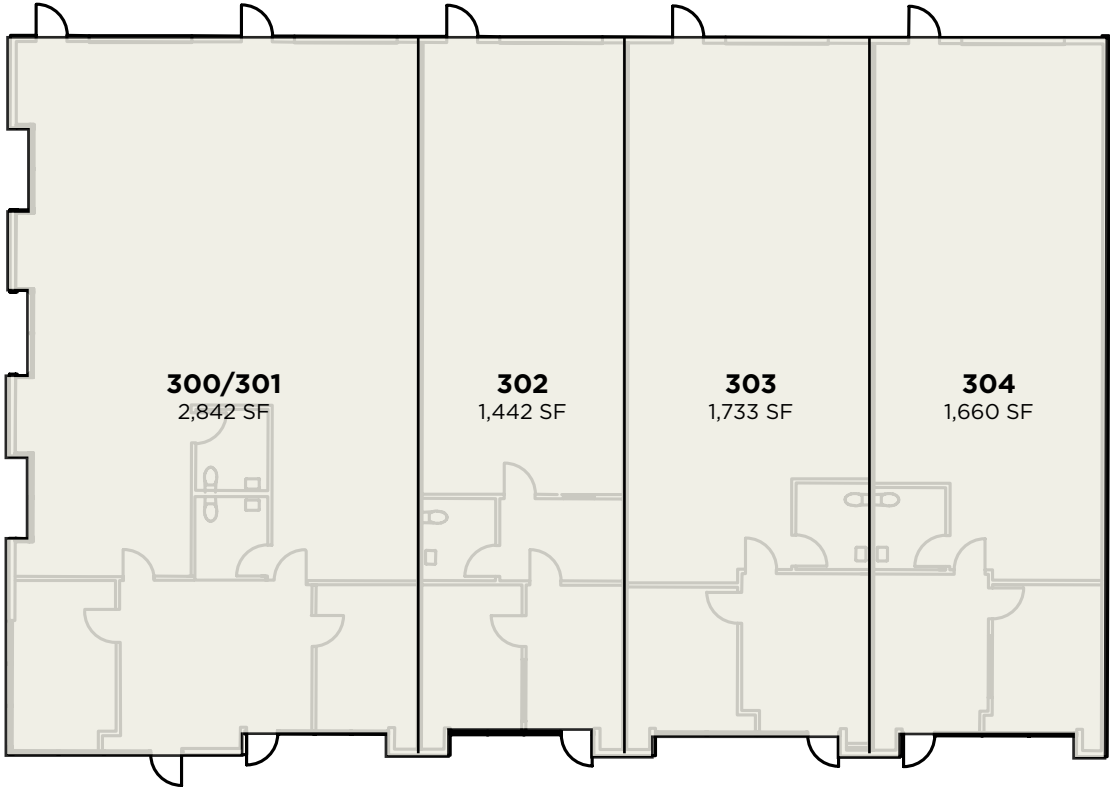
Fire Sprinkler: Yes

Zoning: 5.4 – General Industrial

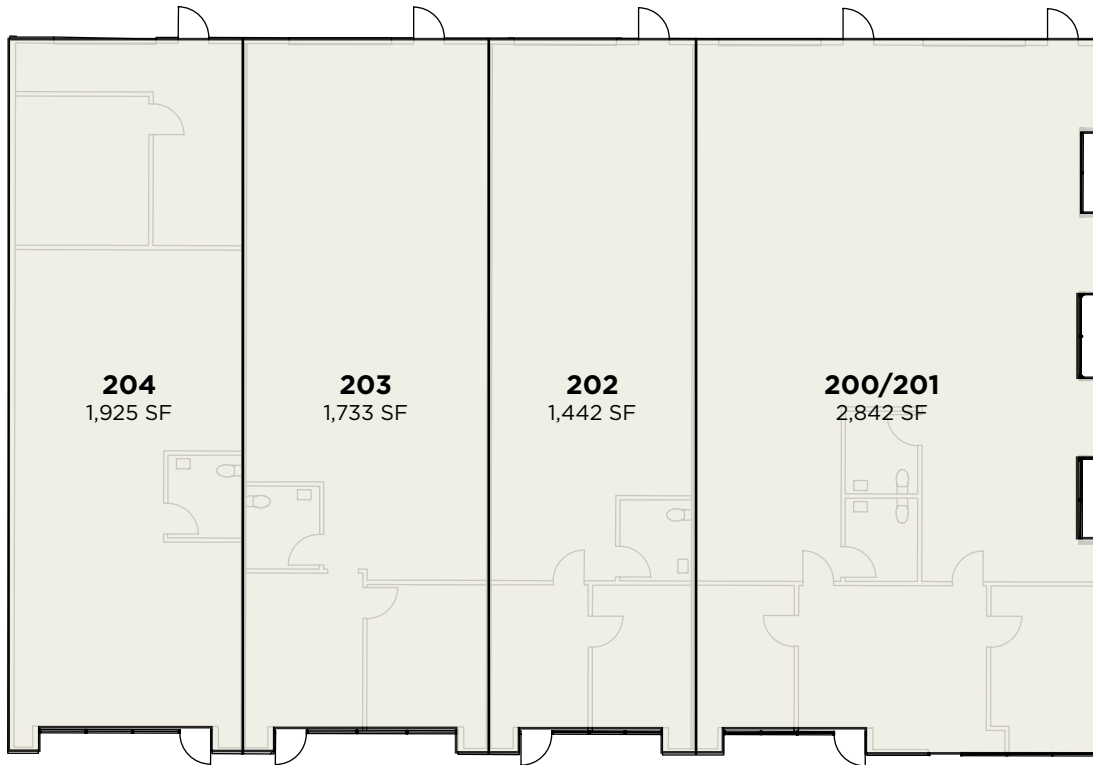




UNIT	SIZE	OFC	PRICE	STATUS	FLOOR PLAN
100/101	3,200	T.S.	TBD	TBD	TBD
102	1,752	T.S.	TBD	TBD	TBD
103	1,752	T.S.	\$1,050,000.00	Available	VIEW
104	1,752	T.S.	\$1,050,000.00	Available	VIEW
105	1,752	T.S.	TBD	TBD	TBD
106	1,476	T.S.	TBD	TBD	TBD
107	1,476	T.S.	TBD	TBD	TBD
108	1,476	T.S.	TBD	TBD	TBD
109	1,476	T.S.	TBD	TBD	TBD
110	1,752	T.S.	TBD	TBD	TBD
111	1,752	T.S.	TBD	TBD	TBD
112	1,752	T.S.	TBD	TBD	TBD
113	1,752	T.S.	TBD	TBD	TBD
114/115	3,201	T.S.	\$2,000,000.00	Available	VIEW



UNIT	SIZE	OFC	PRICE	STATUS	FLOOR PLAN
300/301	2,842	T.S.	\$1,705,000.00	Available	VIEW
302	1,442	T.S.	TBD	TBD	TBD
303	1,733	T.S.	TBD	TBD	TBD
304	1,660	T.S.	TBD	TBD	TBD



UNIT	SIZE	OFC	PRICE	STATUS	FLOOR PLAN
200/201	2,842	T.S.	\$1,705,000.00	Available	VIEW
202	1,442	T.S.	\$887,500.00	Available	VIEW
203	1,733	T.S.	TBD	TBD	TBD
204	1,925	T.S.	TBD	TBD	TBD



12 HAMMOND

10 HAMMOND

8 HAMMOND

For More Information, Please Contact:



JOHN GRIFFIN

Executive Managing Director
+1 949 372 4902
John.griffin@cushwake.com
Lic. #01026231

MAX WANG

Senior Associate
+1 949 372 4903
Max.wang@cushwake.com
Lic. #01253546

THOMAS GRIFFIN

Associate
+1 949 930 4380
Thomas.griffin@cushwake.com
Lic #02260734



TIM WALKER

Senior Vice President
+1 949 230 7649
Timwalker@lee-associates.com
Lic #01218076

PITZER GILLS

Associate
+1 727 366 5825
Pgills@lee-associates.com
Lic #02254884

A QUALITY DEVELOPMENT BY:



HAMMOND BUSINESS PARK

8, 10, & 12 HAMMOND | IRVINE SPECTRUM, CA 92618



©2026 Cushman & Wakefield. All rights reserved. The information contained in this communication is strictly confidential. This information has been obtained from sources believed to be reliable but has not been verified. NO WARRANTY OR REPRESENTATION, EXPRESS OR IMPLIED, IS MADE AS TO THE CONDITION OF THE PROPERTY (OR PROPERTIES) REFERENCED HEREIN OR AS TO THE ACCURACY OR COMPLETENESS OF THE INFORMATION CONTAINED HEREIN, AND SAME IS SUBMITTED SUBJECT TO ERRORS, OMISSIONS, CHANGE OF PRICE, RENTAL OR OTHER CONDITIONS, WITHDRAWAL WITHOUT NOTICE, AND TO ANY SPECIAL LISTING CONDITIONS IMPOSED BY THE PROPERTY OWNER(S). ANY PROJECTIONS, OPINIONS OR ESTIMATES ARE SUBJECT TO UNCERTAINTY AND DO NOT SIGNIFY CURRENT OR FUTURE PROPERTY PERFORMANCE. COE-PM-West-05.29.2026