

2443 & 2559 N Greenfield Rd | 4453,4454,4517 & 4520 E Mallory Circ | Mesa, AZ 85215

# MESA HANGARS AT FALCON FIELD



## HANGAR INVENTORY

Hangar	Size (SF)	Dimensions	Door Clearance	Status
A-101	12,787	120'x100'	108'x28'	VACANT (Divisible)
B-103	7,887	80'x80'	70'x26'	VACANT
C-105	6,084	80'x70'	68'x26'	VACANT
C-109	6,087	80'x70'	68'x26'	VACANT
C-127	5,368	70'x70'	58'x26'	Available Q3 2025
C-130	5,423	70'x70'	58'x26'	Available Q3 2025
D-105	7,947	80'x80'	68'x26'	VACANT
F-106	10,685	100'x100'	88x28'	VACANT
Hangar G	±80,000			Delivering Q1 2026 (Divisible)
Hangar H	±80,000			Breaking Ground 2026

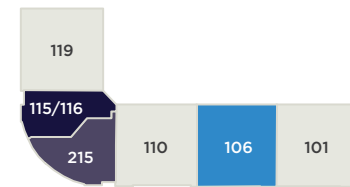
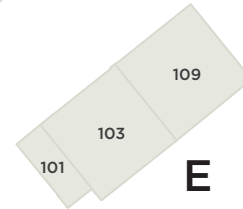
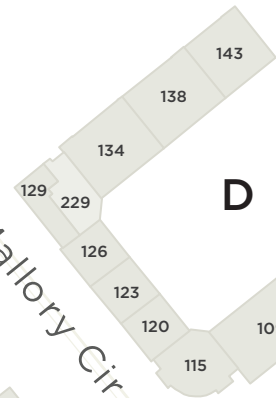
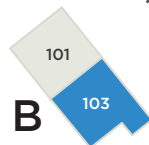
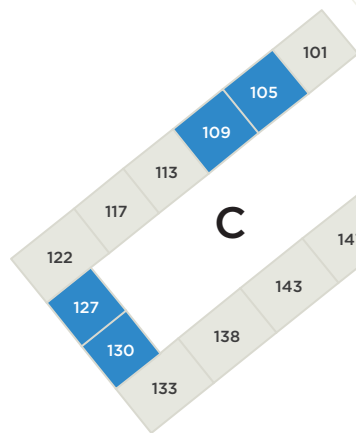
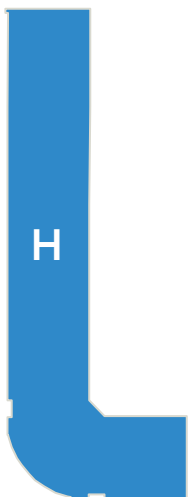
## OFFICE INVENTORY

Office	Size (SF)	Status
A-127	7,009	VACANT
F-115	1,833	VACANT
F-116	3,854	VACANT (Sublease)
F-215	12,769	VACANT (Divisible)



**HANGAR AVAILABILITY**  
**OFFICE AVAILABILITY**

E Mcdowell Rd



N Greenfield Rd

MESA HANGARS AT FALCON FIELD

**FOR MORE INFORMATION, PLEASE CONTACT:**

**JERRY NOBLE**  
 Managing Director  
 +1 602 224 4411  
 jerry.noble@cushwake.com

**ADAM MADISON**  
 Executive Director  
 +1 602 339 1207  
 adam.madison@cushwake.com

**KYLE STICKLES**  
 Senior Director  
 +1 602 229 5823  
 kyle.stickles@cushwake.com

