

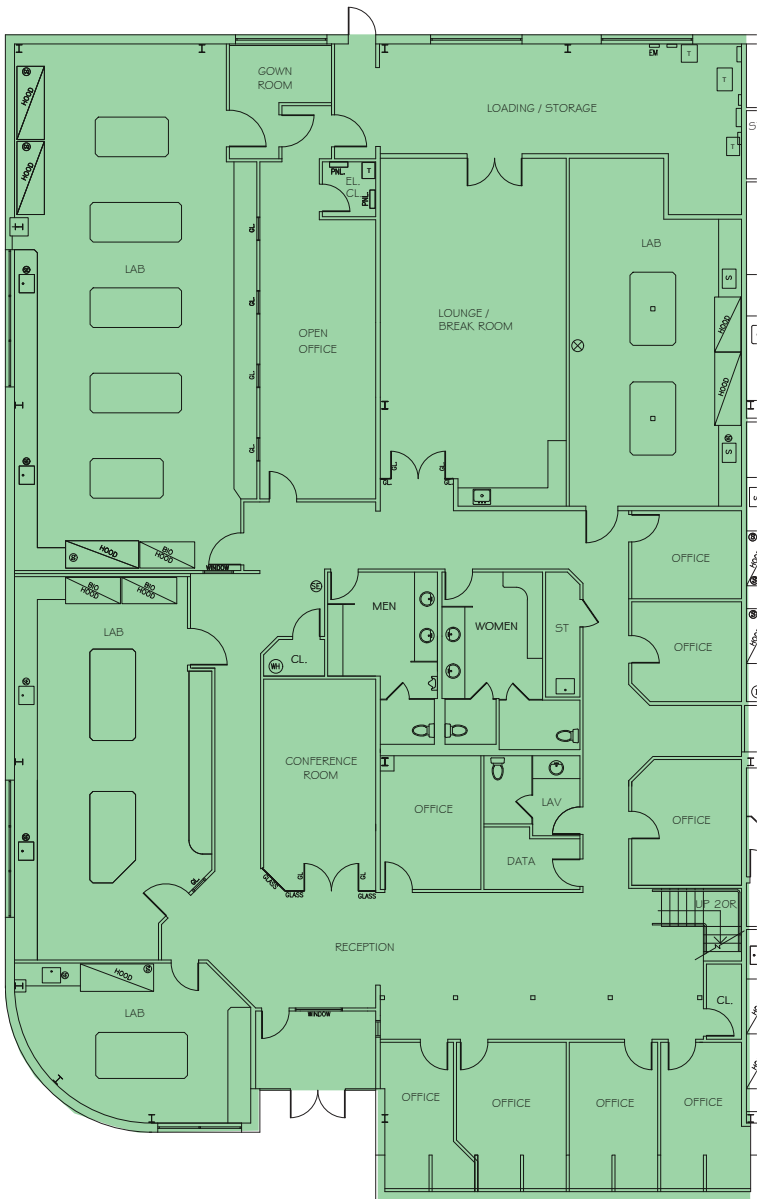


# PRINCETON RESEARCH LABS

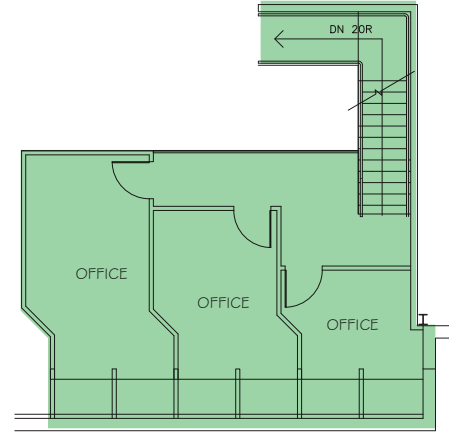
1,7,9 & 11 DEERPARK DRIVE

1 DEERPARK DRIVE

# SUITE A 11,746 SF



**First Floor Plan**



**Mezzanine Plan**

Charles Parmelli | 732 754 8488 | [charles.parmelli@cushwake.com](mailto:charles.parmelli@cushwake.com)

Shawn Straka | 973 292 4603 | [shawn.straka@cushwake.com](mailto:shawn.straka@cushwake.com)

Todd Elfand | 732 452 6187 | [todd.elfand@cushwake.com](mailto:todd.elfand@cushwake.com)



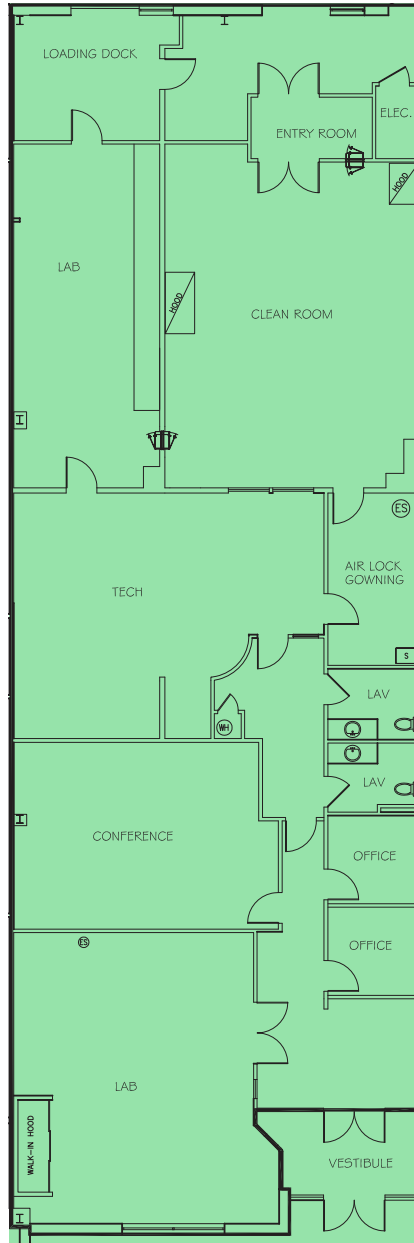


# PRINCETON RESEARCH LABS

1,7,9 & 11 DEERPARK DRIVE

1 DEERPARK DRIVE

# SUITE D 4,697 SF



Charles Parmelli | 732 754 8488 | [charles.parmelli@cushwake.com](mailto:charles.parmelli@cushwake.com)

Shawn Straka | 973 292 4603 | [shawn.straka@cushwake.com](mailto:shawn.straka@cushwake.com)

Todd Elfand | 732 452 6187 | [todd.elfand@cushwake.com](mailto:todd.elfand@cushwake.com)



**CUSHMAN &  
WAKEFIELD**

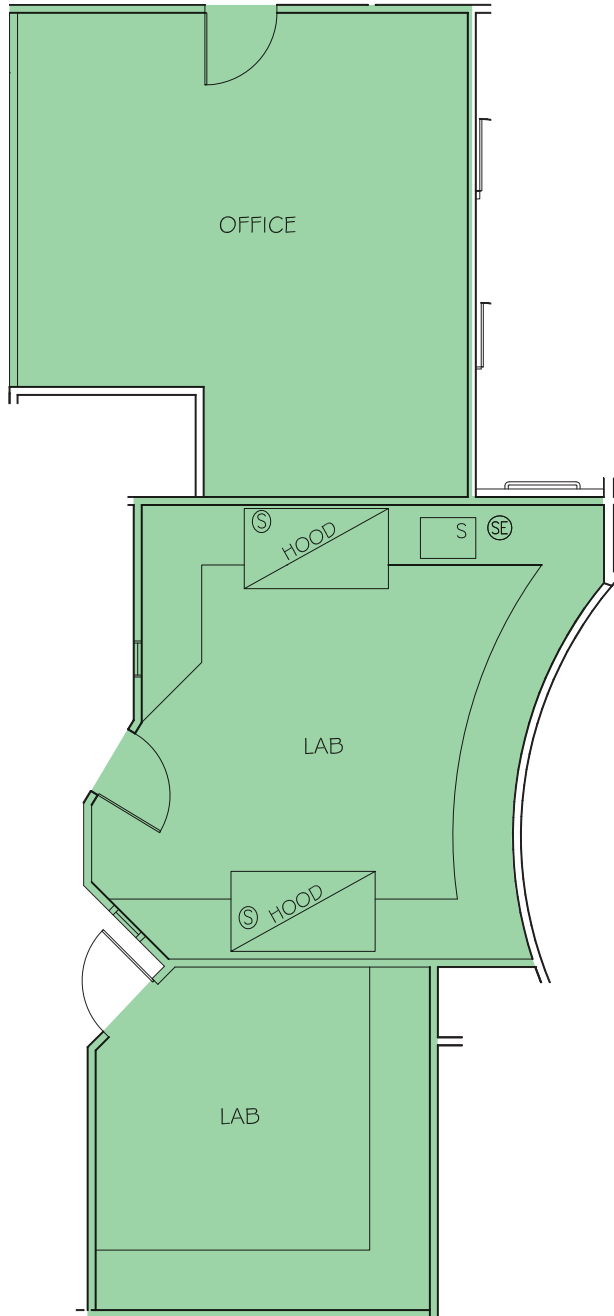


# PRINCETON RESEARCH LABS

1,7,9 & 11 DEERPARK DRIVE

1 DEERPARK DRIVE

## SUITE H-3 1,041 SF



Charles Parmelli | 732 754 8488 | [charles.parmelli@cushwake.com](mailto:charles.parmelli@cushwake.com)

Shawn Straka | 973 292 4603 | [shawn.straka@cushwake.com](mailto:shawn.straka@cushwake.com)

Todd Elfand | 732 452 6187 | [todd.elfand@cushwake.com](mailto:todd.elfand@cushwake.com)



**CUSHMAN &  
WAKEFIELD**

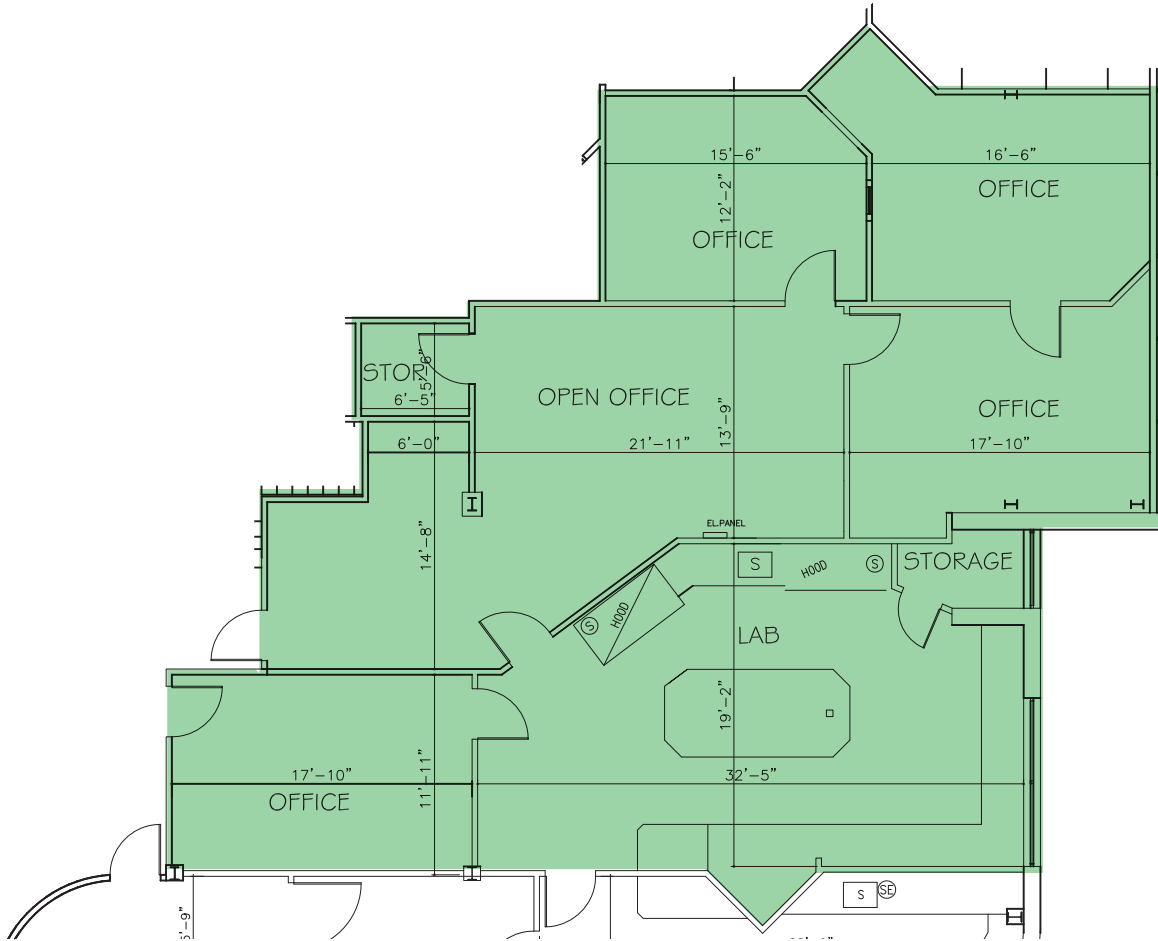


# PRINCETON RESEARCH LABS

1,7,9 & 11 DEERPARK DRIVE

1 DEERPARK DRIVE

## SUITE Q 2,419 SF



Charles Parmelli | 732 754 8488 | [charles.parmelli@cushwake.com](mailto:charles.parmelli@cushwake.com)

Shawn Straka | 973 292 4603 | [shawn.straka@cushwake.com](mailto:shawn.straka@cushwake.com)

Todd Elfand | 732 452 6187 | [todd.elfand@cushwake.com](mailto:todd.elfand@cushwake.com)



CUSHMAN &  
WAKEFIELD

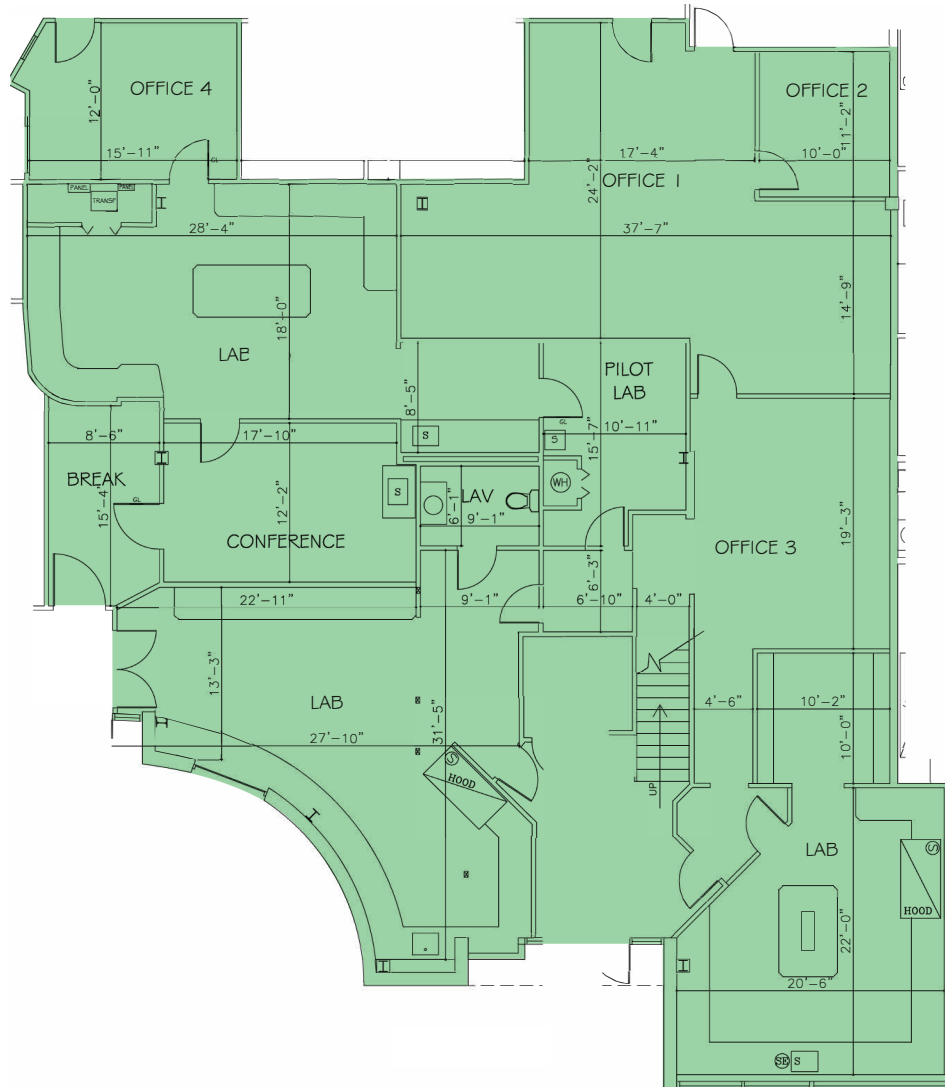


# PRINCETON RESEARCH LABS

1,7,9 & 11 DEERPARK DRIVE

7 DEERPARK DRIVE

# SUITE C 4,477 SF



Charles Parmelli | 732 754 8488 | [charles.parmelli@cushwake.com](mailto:charles.parmelli@cushwake.com)

Shawn Straka | 973 292 4603 | [shawn.straka@cushwake.com](mailto:shawn.straka@cushwake.com)

Todd Elfand | 732 452 6187 | [todd.elfand@cushwake.com](mailto:todd.elfand@cushwake.com)



**CUSHMAN &  
WAKEFIELD**

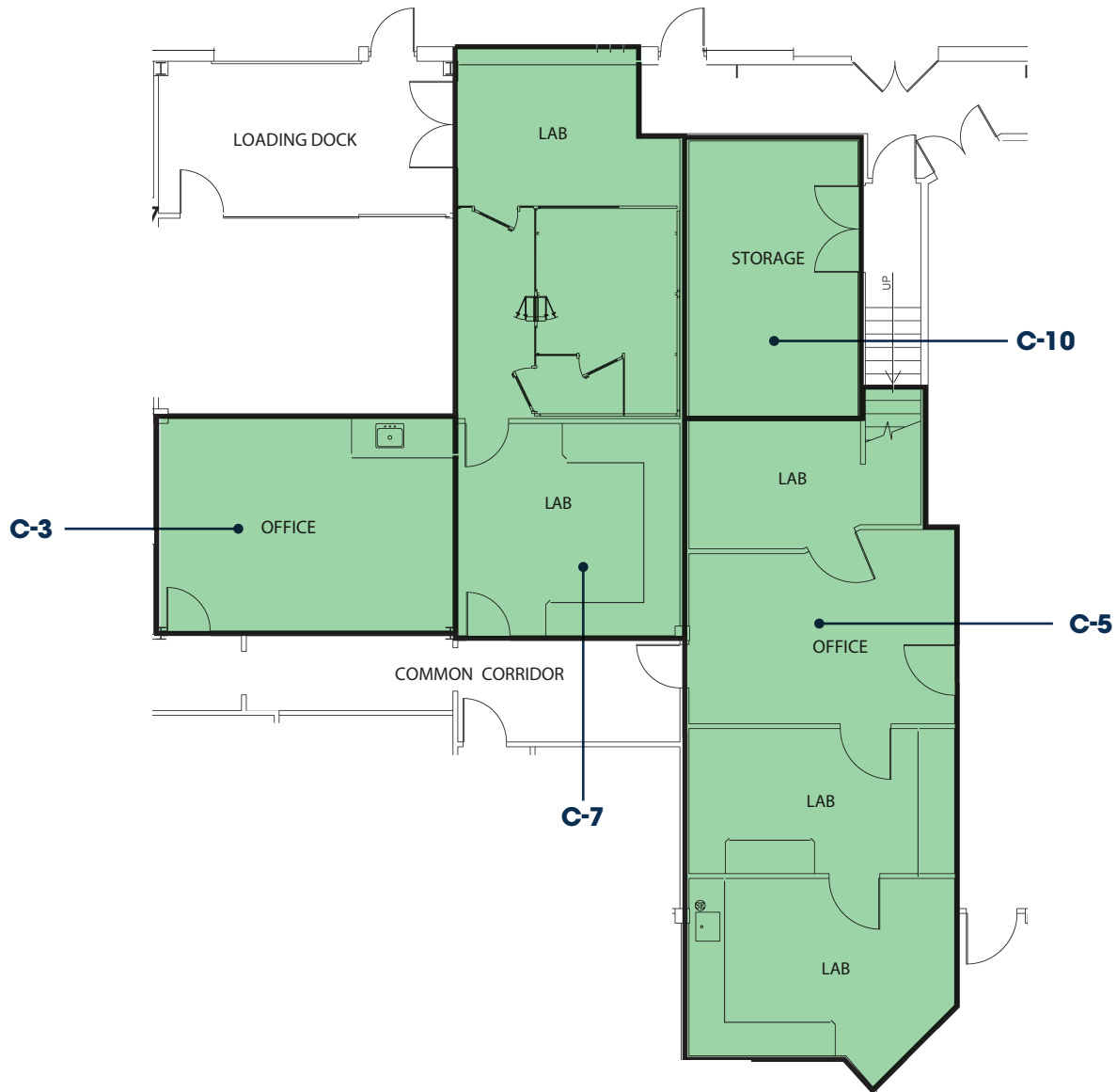


# PRINCETON RESEARCH LABS

1,7,9 & 11 DEERPARK DRIVE

7 DEERPARK DRIVE

<b>SUITE C-3</b>	<b> </b>	<b>357 SF</b>
<b>SUITE C-5</b>	<b> </b>	<b>950 SF</b>
<b>SUITE C-7</b>	<b> </b>	<b>722 SF</b>
<b>SUITE C-10</b>	<b> </b>	<b>276 SF</b>



Charles Parmelli | 732 754 8488 | [charles.parmelli@cushwake.com](mailto:charles.parmelli@cushwake.com)

Shawn Straka | 973 292 4603 | [shawn.straka@cushwake.com](mailto:shawn.straka@cushwake.com)

Todd Elfand | 732 452 6187 | [todd.elfand@cushwake.com](mailto:todd.elfand@cushwake.com)



**CUSHMAN &  
WAKEFIELD**

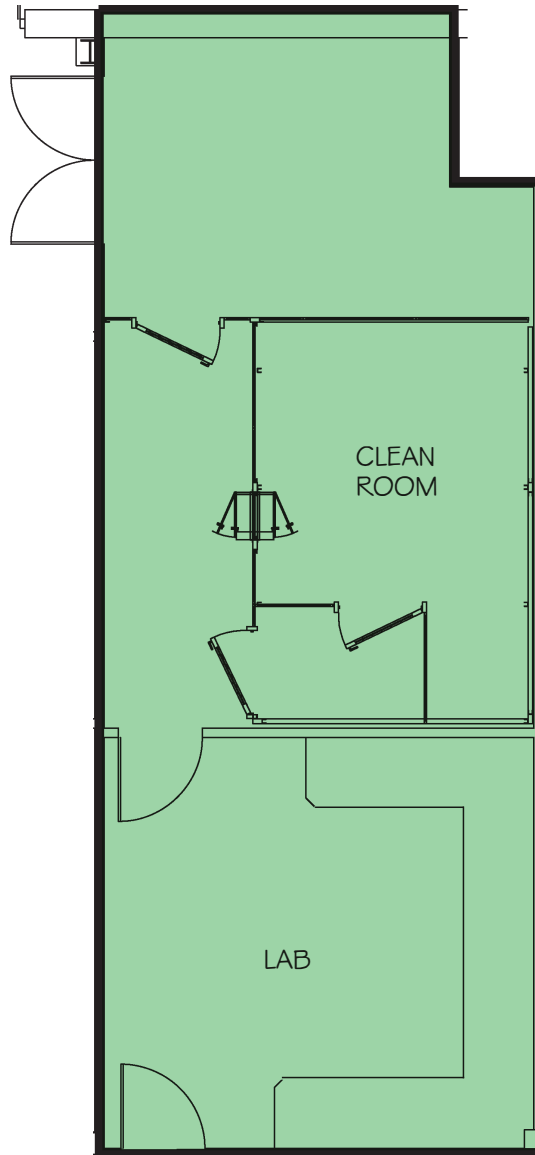


# PRINCETON RESEARCH LABS

1,7,9 & 11 DEERPARK DRIVE

7 DEERPARK DRIVE

## SUITE C-7 722 SF



Charles Parmelli | 732 754 8488 | [charles.parmelli@cushwake.com](mailto:charles.parmelli@cushwake.com)

Shawn Straka | 973 292 4603 | [shawn.straka@cushwake.com](mailto:shawn.straka@cushwake.com)

Todd Elfand | 732 452 6187 | [todd.elfand@cushwake.com](mailto:todd.elfand@cushwake.com)



**CUSHMAN &  
WAKEFIELD**

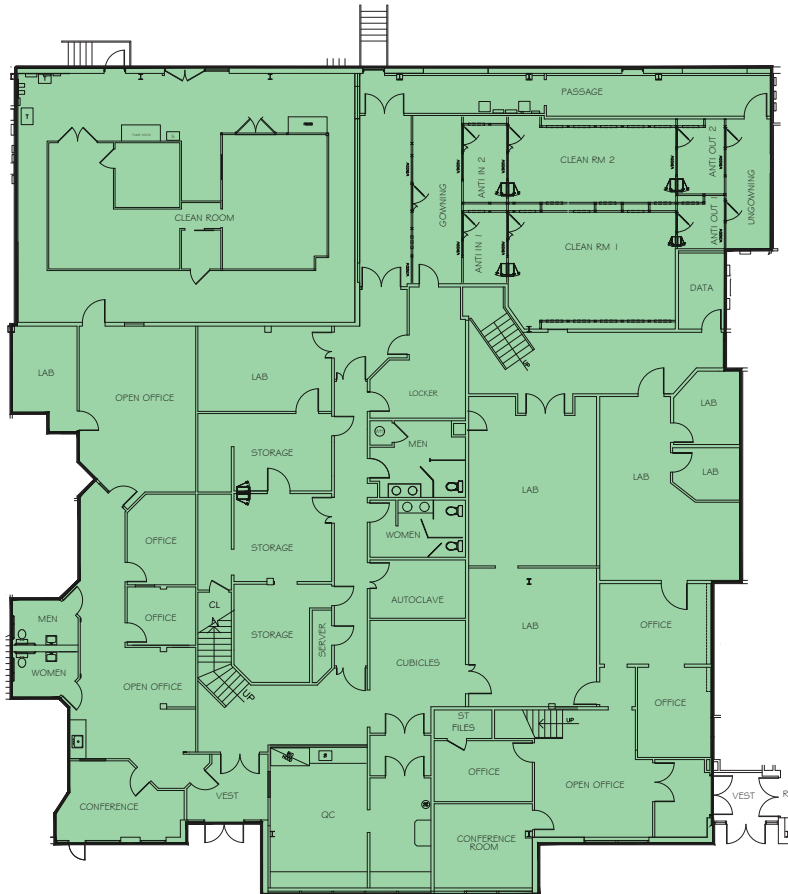


# PRINCETON RESEARCH LABS

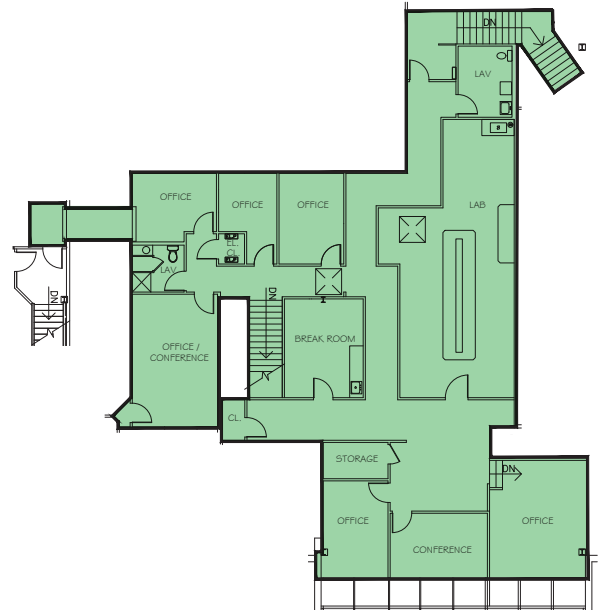
1,7,9 & 11 DEERPARK DRIVE

7 DEERPARK DRIVE

## SUITE E & F 17,428 SF



**First Floor Plan**



**Mezzanine Plan**

Charles Parmelli | 732 754 8488 | [charles.parmelli@cushwake.com](mailto:charles.parmelli@cushwake.com)

Shawn Straka | 973 292 4603 | [shawn.straka@cushwake.com](mailto:shawn.straka@cushwake.com)

Todd Elfand | 732 452 6187 | [todd.elfand@cushwake.com](mailto:todd.elfand@cushwake.com)



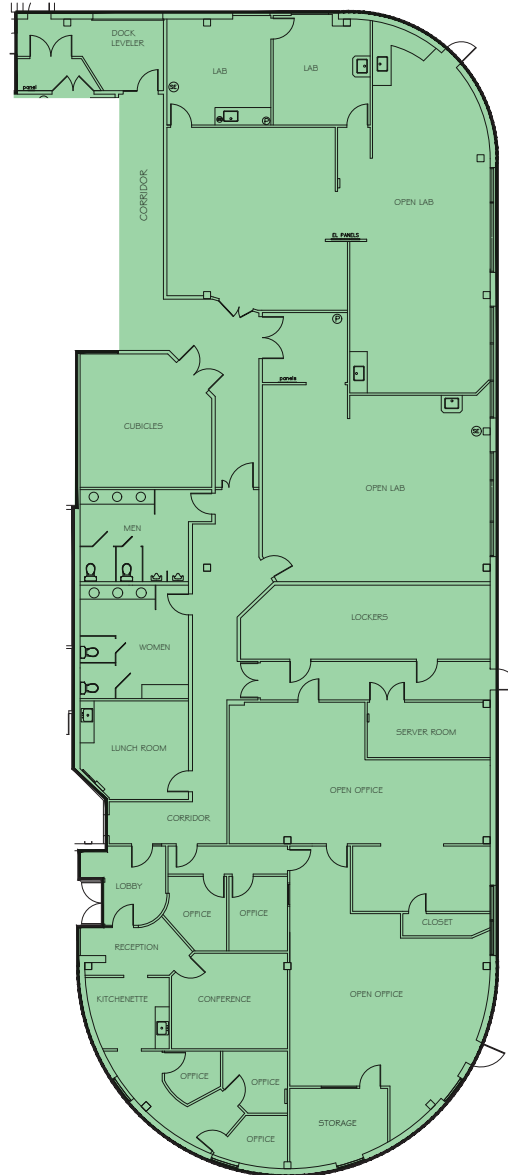


# PRINCETON RESEARCH LABS

1,7,9 & 11 DEERPARK DRIVE

7 DEERPARK DRIVE

# SUITE K 9,358 SF



Charles Parmelli | 732 754 8488 | [charles.parmelli@cushwake.com](mailto:charles.parmelli@cushwake.com)

Shawn Straka | 973 292 4603 | [shawn.straka@cushwake.com](mailto:shawn.straka@cushwake.com)

Todd Elfand | 732 452 6187 | [todd.elfand@cushwake.com](mailto:todd.elfand@cushwake.com)



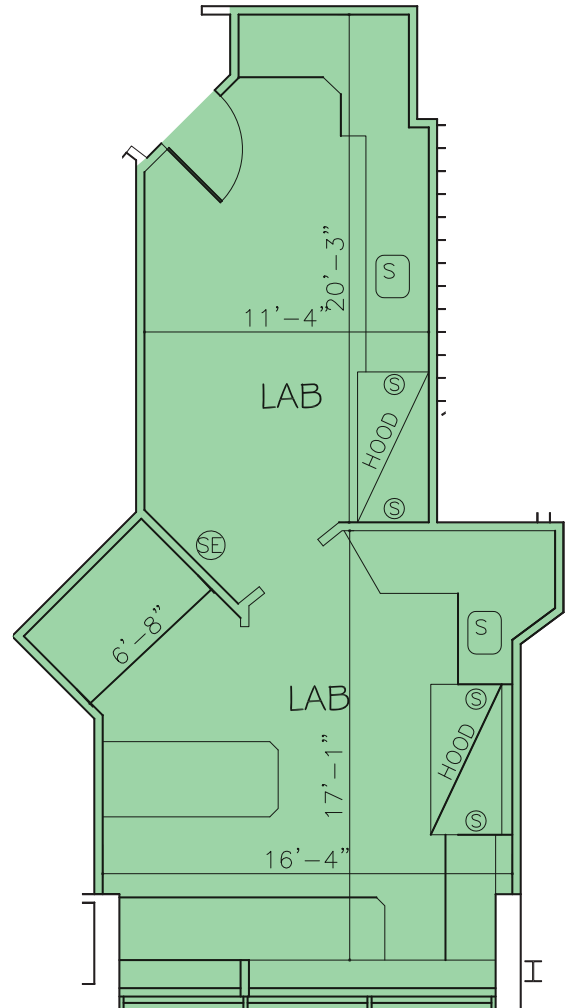
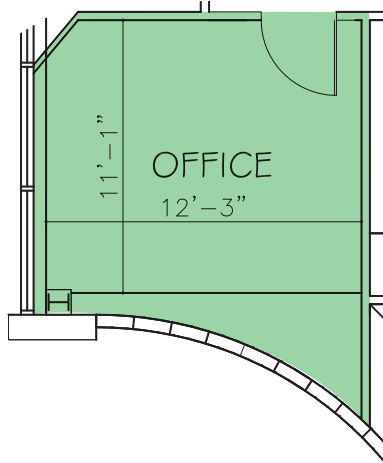


# PRINCETON RESEARCH LABS

1,7,9 & 11 DEERPARK DRIVE

7 DEERPARK DRIVE

# SUITE M-3 & M-7 850 SF



Charles Parmelli | 732 754 8488 | [charles.parmelli@cushwake.com](mailto:charles.parmelli@cushwake.com)

Shawn Straka | 973 292 4603 | [shawn.straka@cushwake.com](mailto:shawn.straka@cushwake.com)

Todd Elfand | 732 452 6187 | [todd.elfand@cushwake.com](mailto:todd.elfand@cushwake.com)



**CUSHMAN &  
WAKEFIELD**

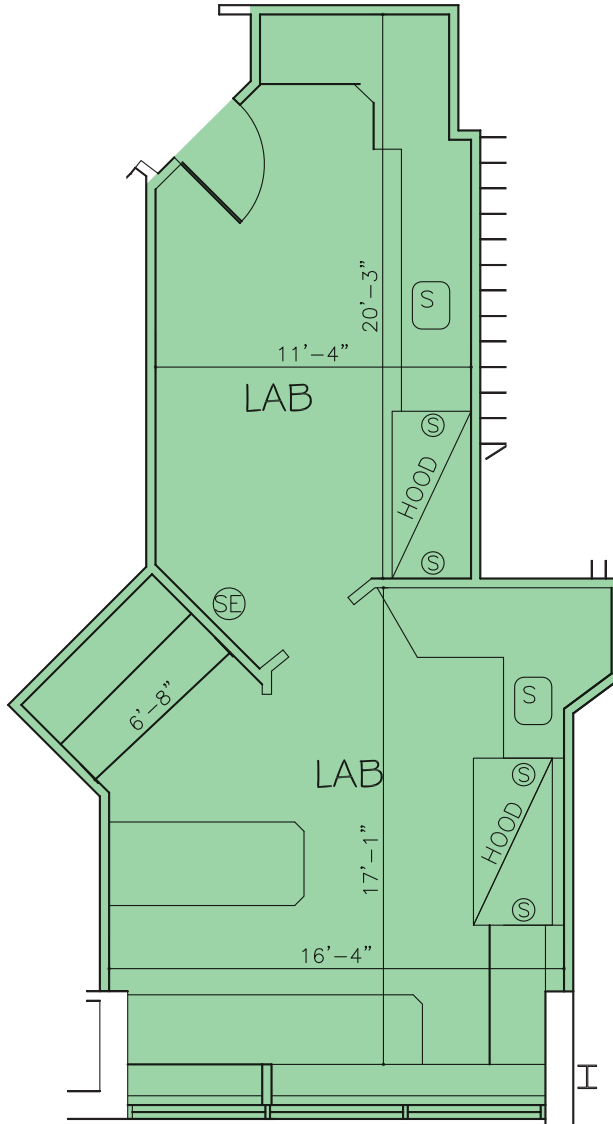


# PRINCETON RESEARCH LABS

1,7,9 & 11 DEERPARK DRIVE

7 DEERPARK DRIVE

## SUITE M-7 650 SF



Charles Parmelli | 732 754 8488 | [charles.parmelli@cushwake.com](mailto:charles.parmelli@cushwake.com)

Shawn Straka | 973 292 4603 | [shawn.straka@cushwake.com](mailto:shawn.straka@cushwake.com)

Todd Elfand | 732 452 6187 | [todd.elfand@cushwake.com](mailto:todd.elfand@cushwake.com)



CUSHMAN &  
WAKEFIELD

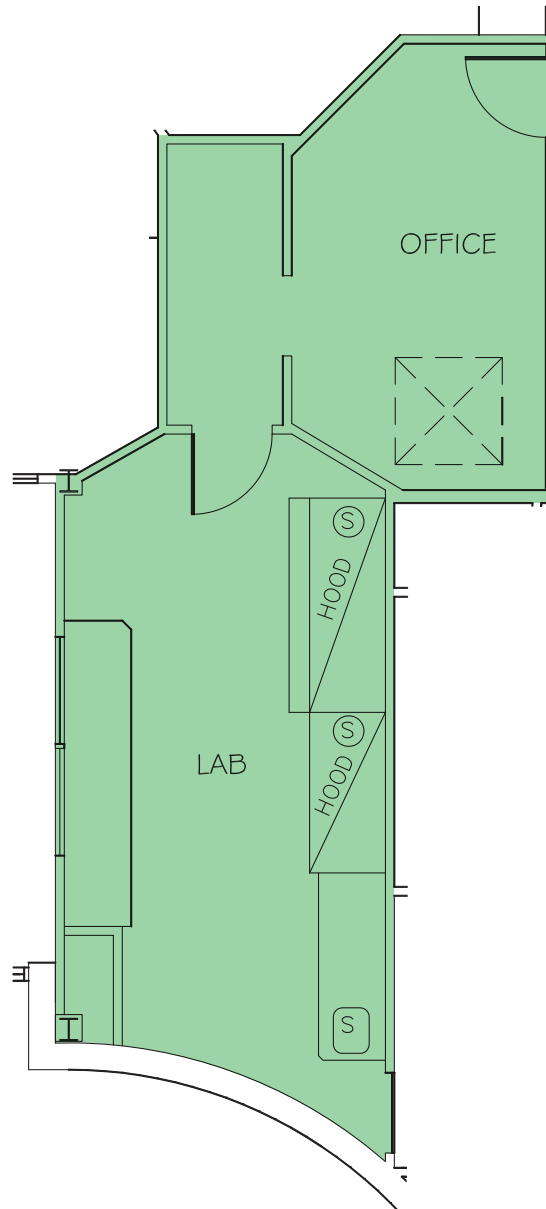


# PRINCETON RESEARCH LABS

1,7,9 & 11 DEERPARK DRIVE

7 DEERPARK DRIVE

## SUITE M-8 589 SF



Charles Parmelli | 732 754 8488 | [charles.parmelli@cushwake.com](mailto:charles.parmelli@cushwake.com)

Shawn Straka | 973 292 4603 | [shawn.straka@cushwake.com](mailto:shawn.straka@cushwake.com)

Todd Elfand | 732 452 6187 | [todd.elfand@cushwake.com](mailto:todd.elfand@cushwake.com)



**CUSHMAN &  
WAKEFIELD**

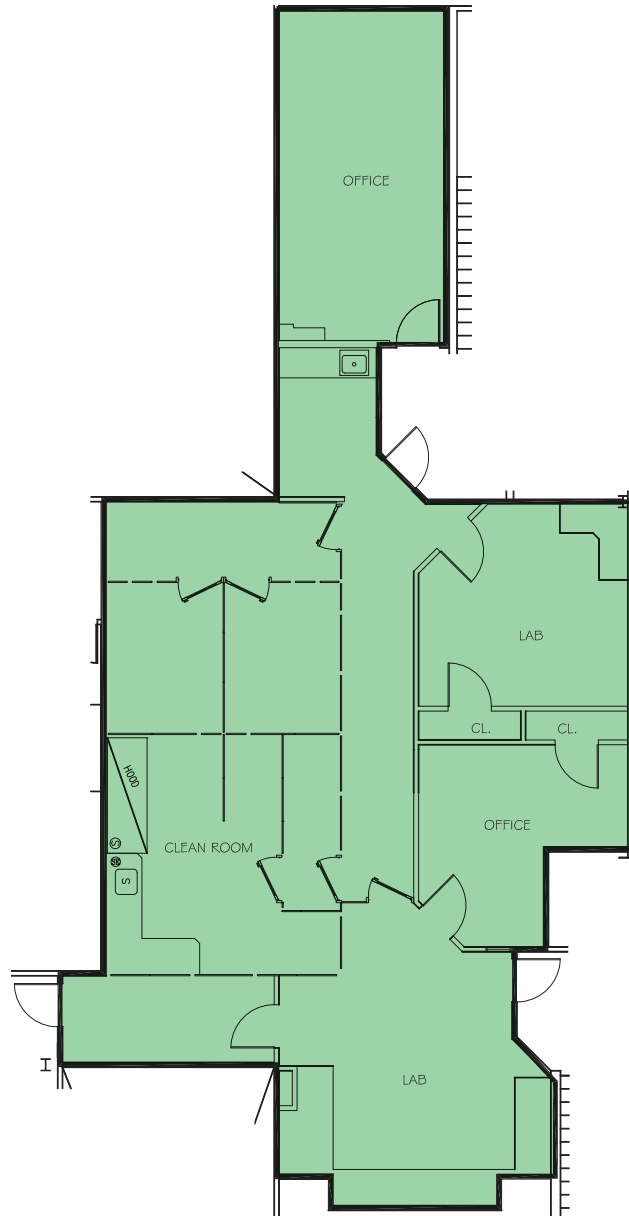


# PRINCETON RESEARCH LABS

1,7,9 & 11 DEERPARK DRIVE

7 DEERPARK DRIVE

## SUITE M-12 2,150 SF



Charles Parmelli | 732 754 8488 | [charles.parmelli@cushwake.com](mailto:charles.parmelli@cushwake.com)

Shawn Straka | 973 292 4603 | [shawn.straka@cushwake.com](mailto:shawn.straka@cushwake.com)

Todd Elfand | 732 452 6187 | [todd.elfand@cushwake.com](mailto:todd.elfand@cushwake.com)



**CUSHMAN &  
WAKEFIELD**

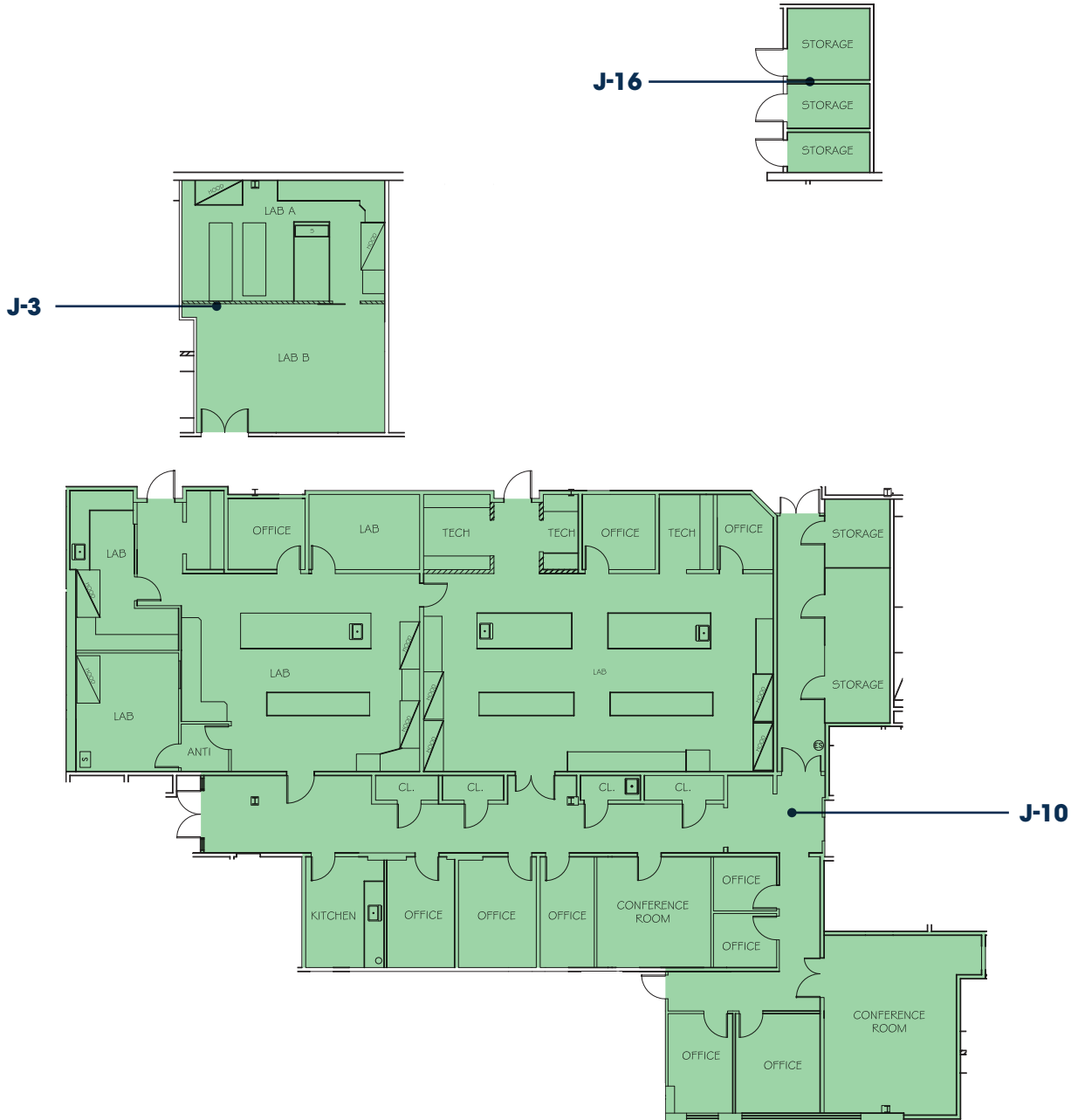


# PRINCETON RESEARCH LABS

1,7,9 & 11 DEERPARK DRIVE

9 DEERPARK DRIVE

<b>SUITE J-3</b>		<b>274 SF</b>
<b>SUITE J-10</b>		<b>7,102 SF</b>
<b>SUITE J-16</b>		<b>964 SF</b>



Charles Parmelli | 732 754 8488 | [charles.parmelli@cushwake.com](mailto:charles.parmelli@cushwake.com)

Shawn Straka | 973 292 4603 | [shawn.straka@cushwake.com](mailto:shawn.straka@cushwake.com)

Todd Elfand | 732 452 6187 | [todd.elfand@cushwake.com](mailto:todd.elfand@cushwake.com)



**CUSHMAN &  
WAKEFIELD**

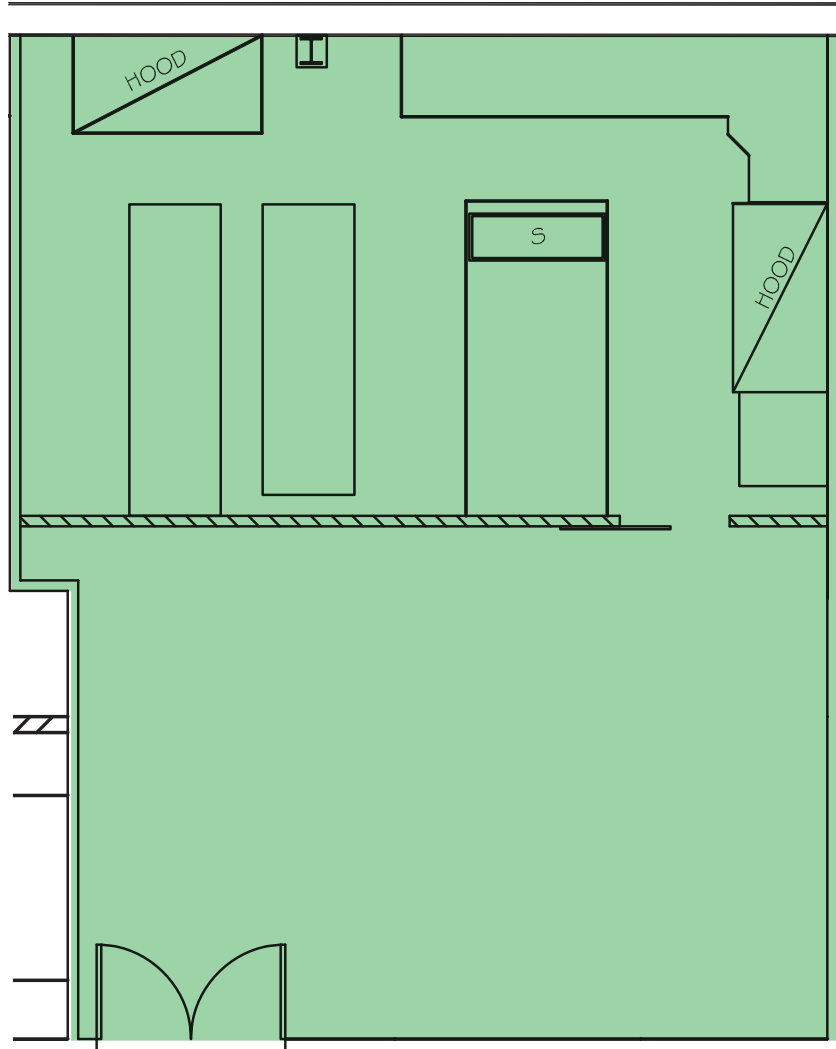


# PRINCETON RESEARCH LABS

1,7,9 & 11 DEERPARK DRIVE

9 DEERPARK DRIVE

## SUITE J-3 964 SF



Charles Parmelli | 732 754 8488 | [charles.parmelli@cushwake.com](mailto:charles.parmelli@cushwake.com)

Shawn Straka | 973 292 4603 | [shawn.straka@cushwake.com](mailto:shawn.straka@cushwake.com)

Todd Elfand | 732 452 6187 | [todd.elfand@cushwake.com](mailto:todd.elfand@cushwake.com)



**CUSHMAN &  
WAKEFIELD**

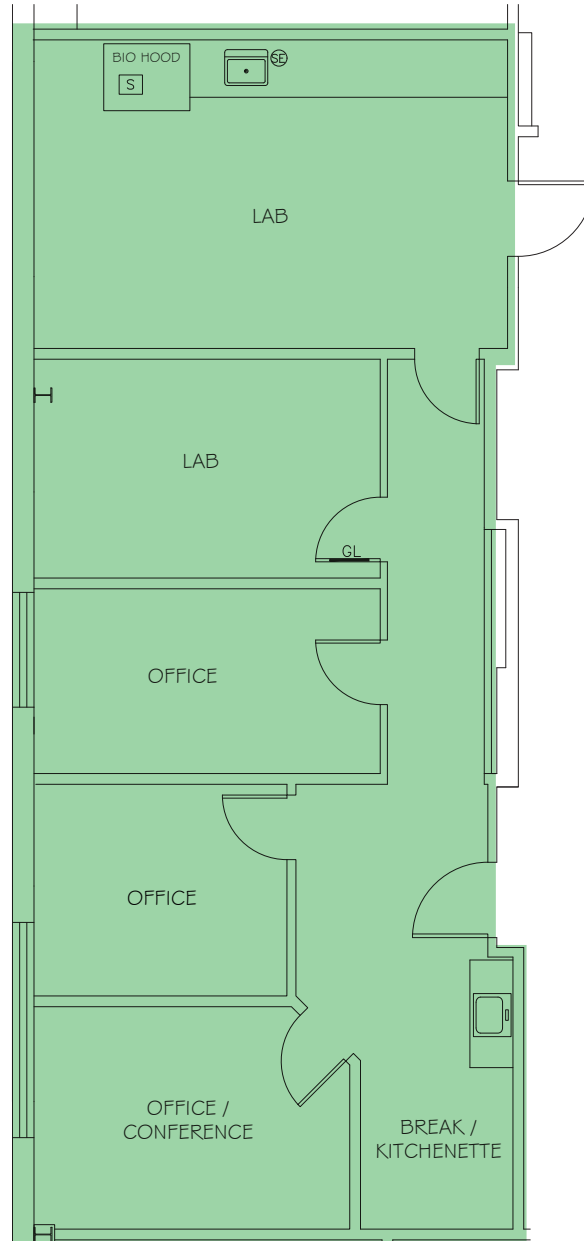


# PRINCETON RESEARCH LABS

1,7,9 & 11 DEERPARK DRIVE

9 DEERPARK DRIVE

## SUITE J-5 1,475 SF



Charles Parmelli | 732 754 8488 | [charles.parmelli@cushwake.com](mailto:charles.parmelli@cushwake.com)

Shawn Straka | 973 292 4603 | [shawn.straka@cushwake.com](mailto:shawn.straka@cushwake.com)

Todd Elfand | 732 452 6187 | [todd.elfand@cushwake.com](mailto:todd.elfand@cushwake.com)



**CUSHMAN &  
WAKEFIELD**

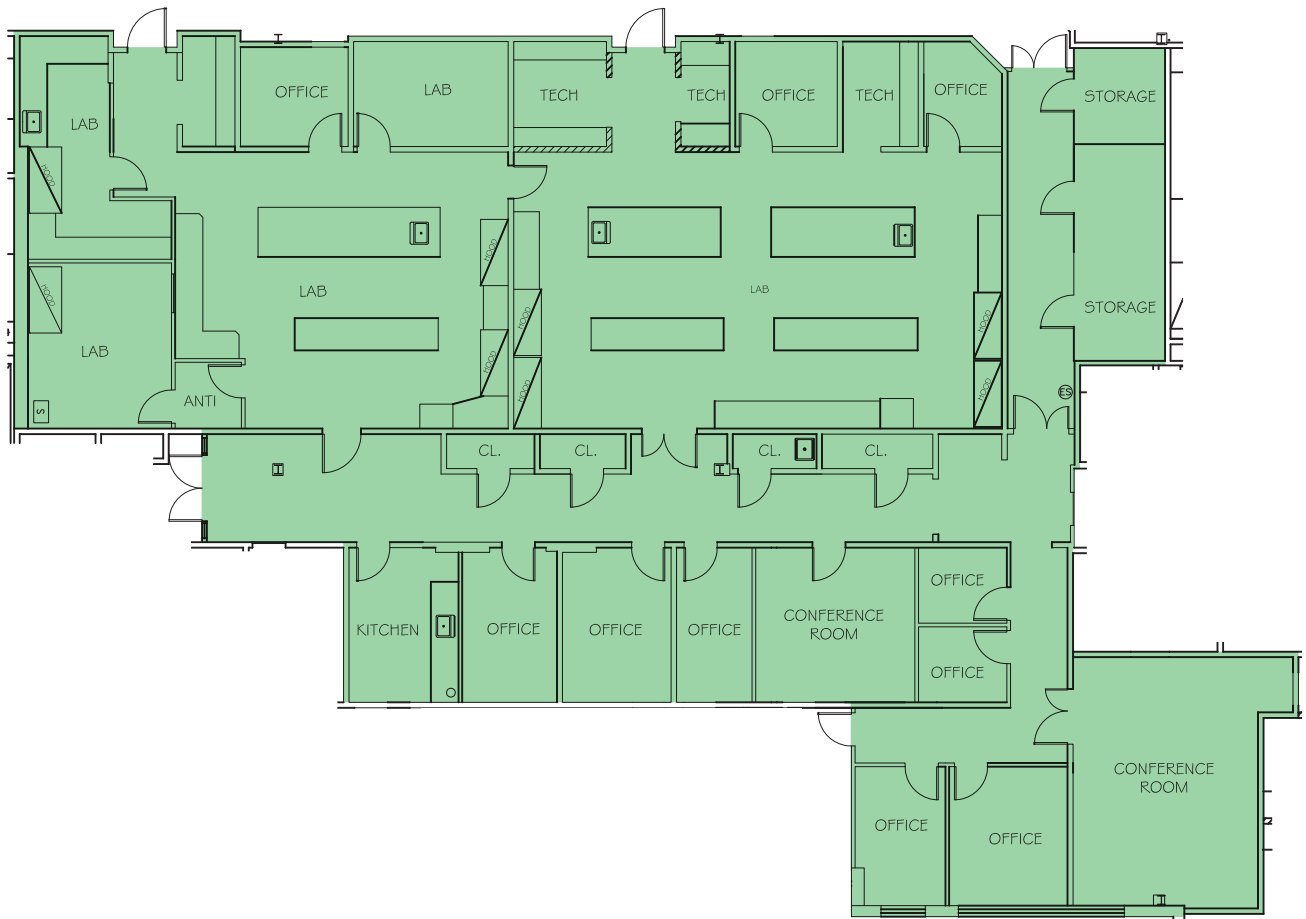


# PRINCETON RESEARCH LABS

1,7,9 & 11 DEERPARK DRIVE

9 DEERPARK DRIVE

## SUITE J-10 7,102 SF



Charles Parmelli | 732 754 8488 | [charles.parmelli@cushwake.com](mailto:charles.parmelli@cushwake.com)

Shawn Straka | 973 292 4603 | [shawn.straka@cushwake.com](mailto:shawn.straka@cushwake.com)

Todd Elfand | 732 452 6187 | [todd.elfand@cushwake.com](mailto:todd.elfand@cushwake.com)



**CUSHMAN &  
WAKEFIELD**

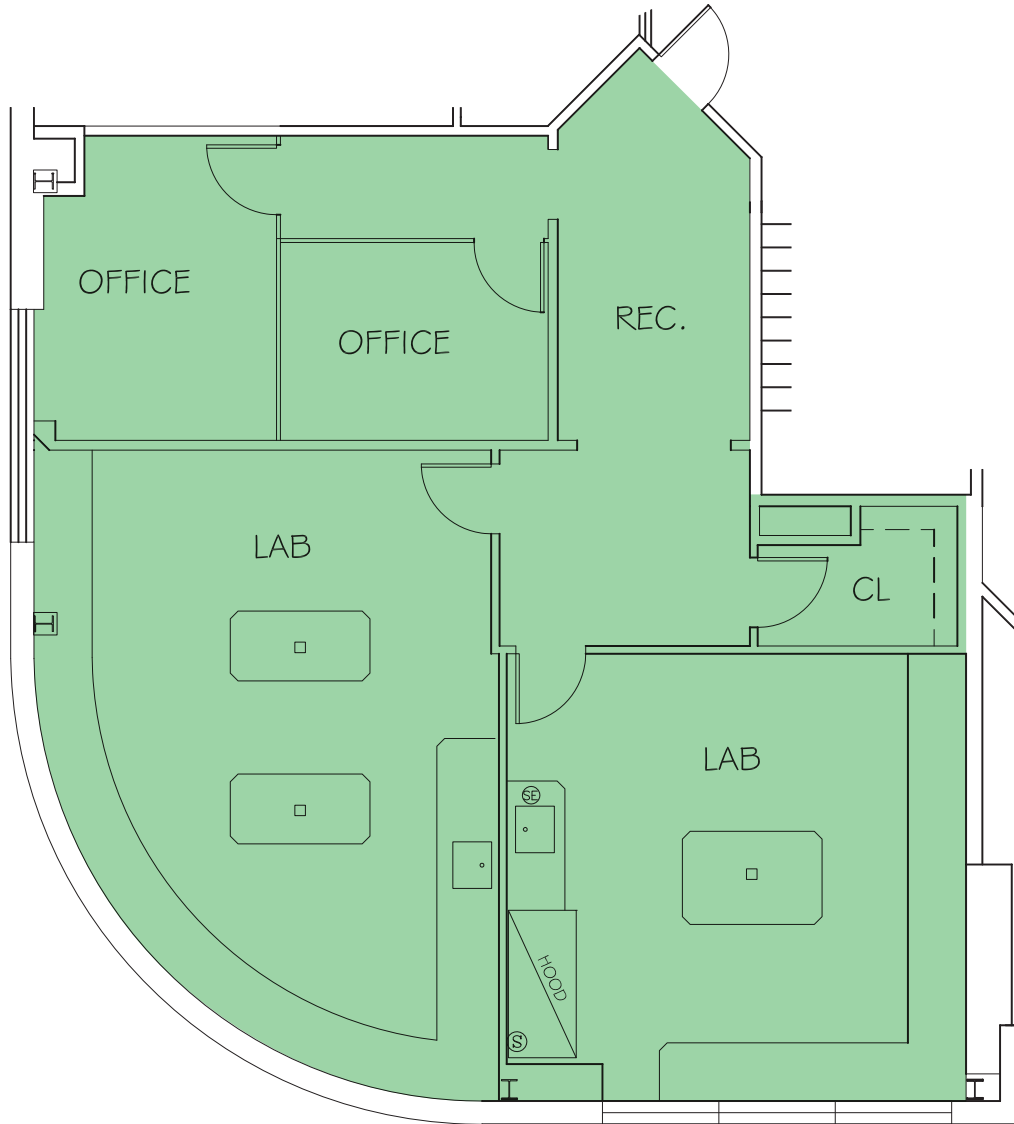


# PRINCETON RESEARCH LABS

1,7,9 & 11 DEERPARK DRIVE

9 DEERPARK DRIVE

## SUITE K-1 1,979 SF



Charles Parmelli | 732 754 8488 | [charles.parmelli@cushwake.com](mailto:charles.parmelli@cushwake.com)

Shawn Straka | 973 292 4603 | [shawn.straka@cushwake.com](mailto:shawn.straka@cushwake.com)

Todd Elfand | 732 452 6187 | [todd.elfand@cushwake.com](mailto:todd.elfand@cushwake.com)



**CUSHMAN &  
WAKEFIELD**



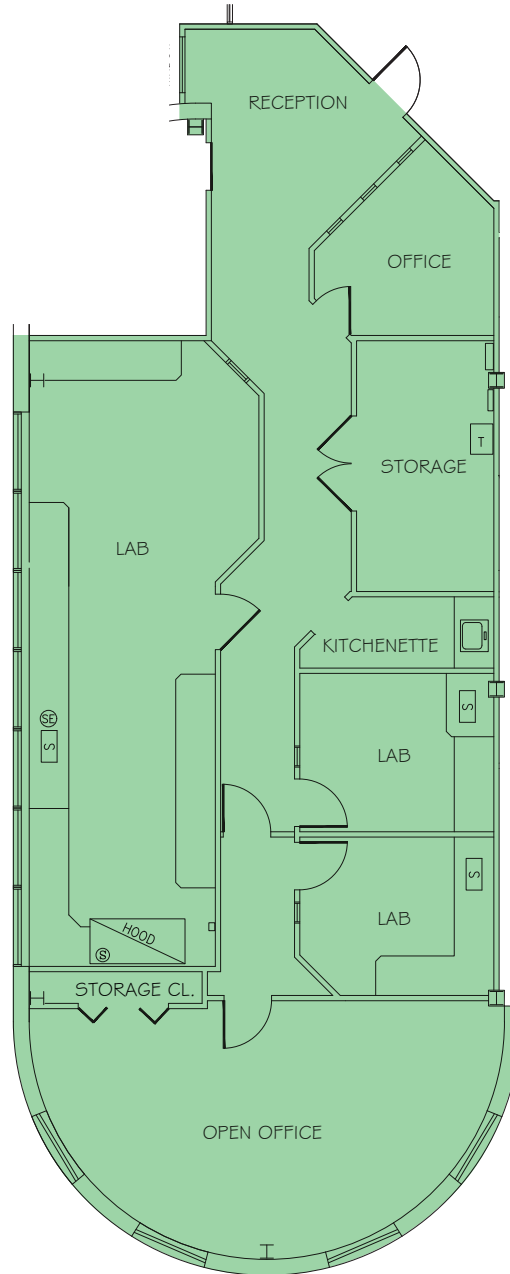
# PRINCETON RESEARCH LABS

1,7,9 & 11 DEERPARK DRIVE

11 DEERPARK DRIVE

# SUITE 100

## 2,327 SF



Charles Parmelli | 732 754 8488 | [charles.parmelli@cushwake.com](mailto:charles.parmelli@cushwake.com)

Shawn Straka | 973 292 4603 | [shawn.straka@cushwake.com](mailto:shawn.straka@cushwake.com)

Todd Elfand | 732 452 6187 | [todd.elfand@cushwake.com](mailto:todd.elfand@cushwake.com)



**CUSHMAN &  
WAKEFIELD**

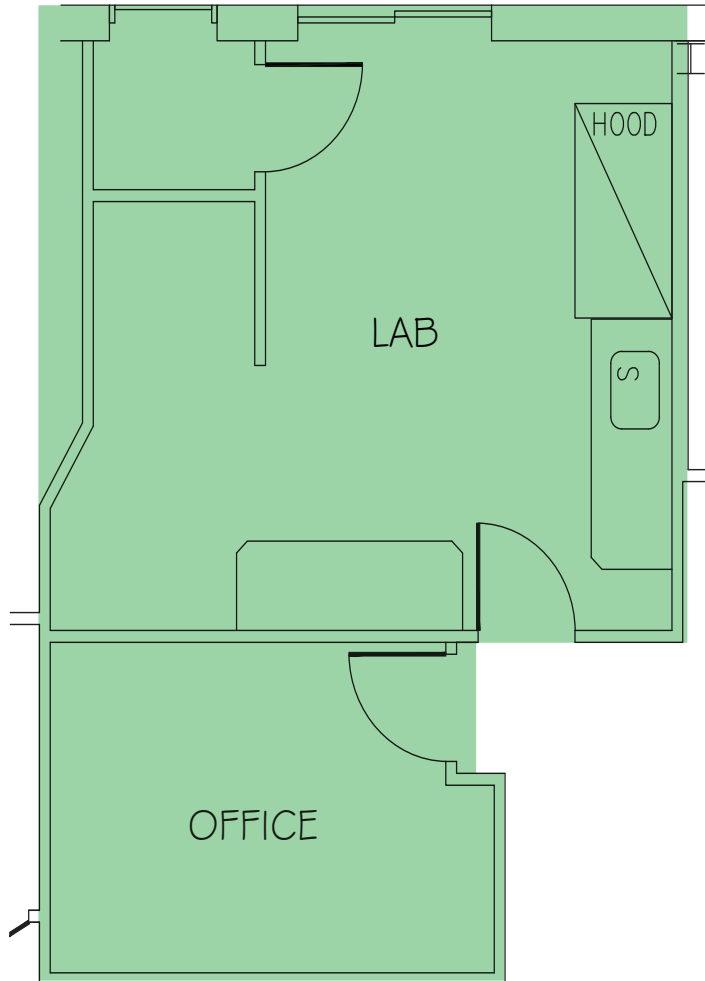


# PRINCETON RESEARCH LABS

1,7,9 & 11 DEERPARK DRIVE

11 DEERPARK DRIVE

## SUITE 102-A 527 SF



Charles Parmelli | 732 754 8488 | [charles.parmelli@cushwake.com](mailto:charles.parmelli@cushwake.com)

Shawn Straka | 973 292 4603 | [shawn.straka@cushwake.com](mailto:shawn.straka@cushwake.com)

Todd Elfand | 732 452 6187 | [todd.elfand@cushwake.com](mailto:todd.elfand@cushwake.com)



**CUSHMAN &  
WAKEFIELD**

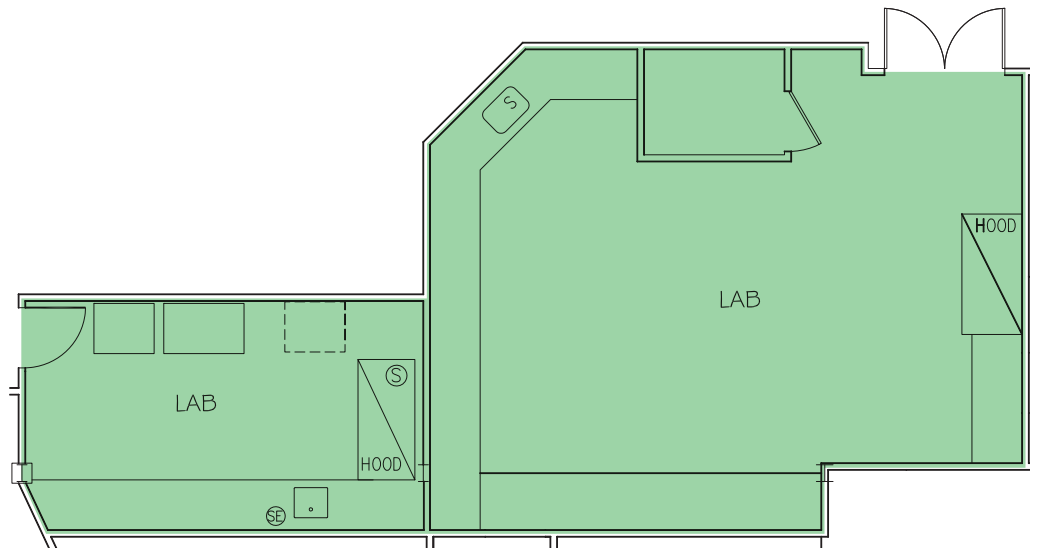
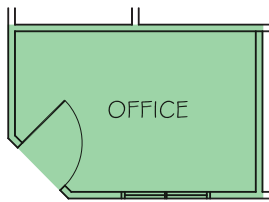


# PRINCETON RESEARCH LABS

1,7,9 & 11 DEERPARK DRIVE

11 DEERPARK DRIVE

# SUITE 102-K 1,160 SF



Charles Parmelli | 732 754 8488 | [charles.parmelli@cushwake.com](mailto:charles.parmelli@cushwake.com)

Shawn Straka | 973 292 4603 | [shawn.straka@cushwake.com](mailto:shawn.straka@cushwake.com)

Todd Elfand | 732 452 6187 | [todd.elfand@cushwake.com](mailto:todd.elfand@cushwake.com)



**CUSHMAN &  
WAKEFIELD**



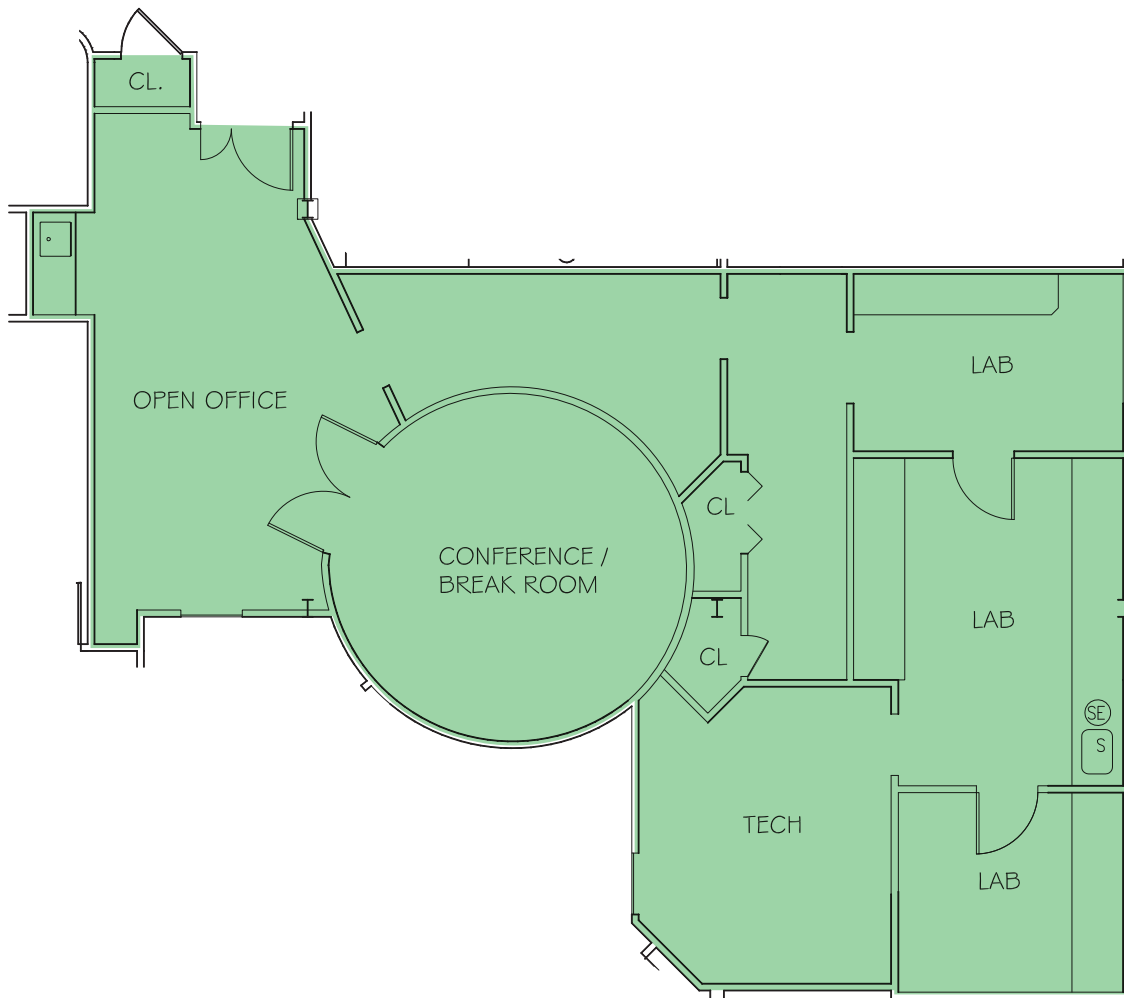
# PRINCETON RESEARCH LABS

1,7,9 & 11 DEERPARK DRIVE

11 DEERPARK DRIVE

## SUITE 106

### 1,691 SF



Charles Parmelli | 732 754 8488 | [charles.parmelli@cushwake.com](mailto:charles.parmelli@cushwake.com)

Shawn Straka | 973 292 4603 | [shawn.straka@cushwake.com](mailto:shawn.straka@cushwake.com)

Todd Elfand | 732 452 6187 | [todd.elfand@cushwake.com](mailto:todd.elfand@cushwake.com)



**CUSHMAN &  
WAKEFIELD**

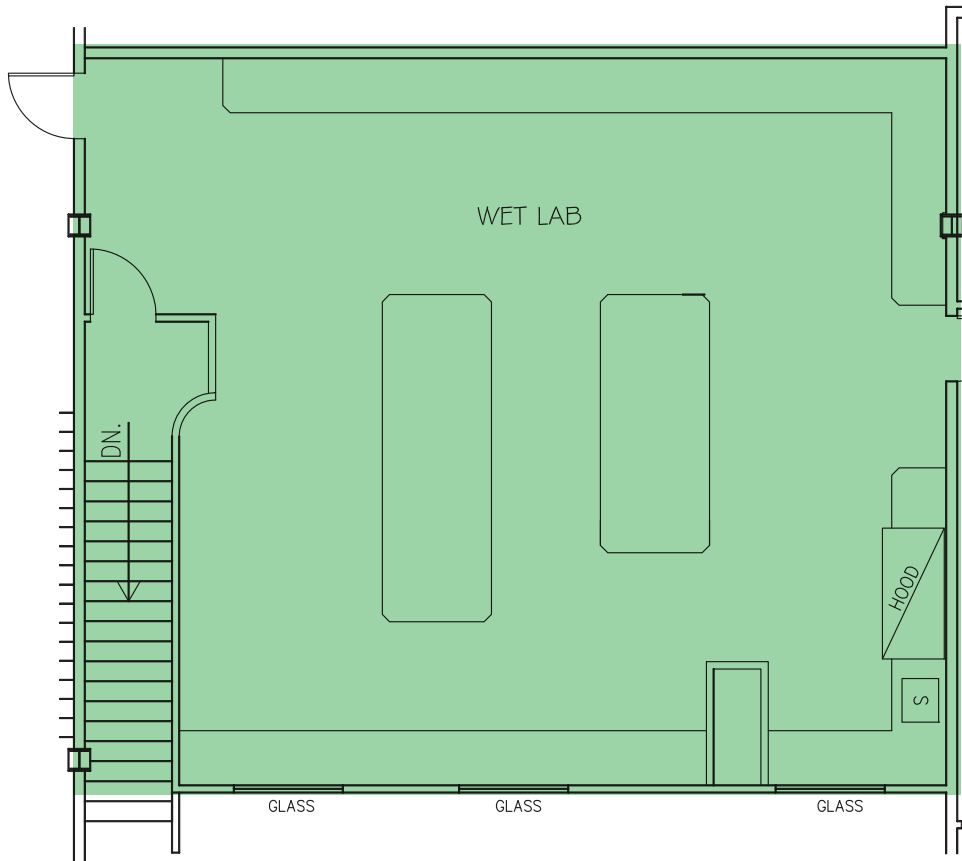


# PRINCETON RESEARCH LABS

1,7,9 & 11 DEERPARK DRIVE

11 DEERPARK DRIVE

## SUITE 120-M 1,344 SF



Charles Parmelli | 732 754 8488 | [charles.parmelli@cushwake.com](mailto:charles.parmelli@cushwake.com)

Shawn Straka | 973 292 4603 | [shawn.straka@cushwake.com](mailto:shawn.straka@cushwake.com)

Todd Elfand | 732 452 6187 | [todd.elfand@cushwake.com](mailto:todd.elfand@cushwake.com)



**CUSHMAN &  
WAKEFIELD**