

FOR LEASE



# MOUNT ANDERSON AT ECHO

14003 MT ANDERSON STREET | RENO, NV 89506



*Brand-new, Class A North Valleys industrial building totaling ±284K SF*



**NEGOTIABLE**  
LEASE RATE

**36'**  
CLEAR HEIGHT



[cushmanwakefield.com](http://cushmanwakefield.com)

Proudly owned and developed by:  
**BECKNELL** | **STAG**  
INDUSTRIAL | INDUSTRIAL

FOR LEASE

# PROPERTY FEATURES

*Located in the North Valleys submarket with excellent access to US-395*

Lease rate negotiable

±284,233 SF available, divisible to ±128,496 SF

±2,506 SF office space

Zoning: Industrial (I)

Land area: 18.50 acres

36' minimum clear height

52 (9'x10') vertical lift dock-high doors, 28 of which are complete with vision light, bumpers, 40,000 lb mechanical dock leveler, dock seal, fans & lights

2 (14' x 16') vertical lift grade-level doors complete with vision light and motorized operator

54' x 48' columns (typical) with 60' speed bay

2,000 amps 277/480 volt 3-phase power

LED lighting system measured at 30 foot-candles 36" aff unobstructed with 15' whips

ESFR sprinkler density

100 dedicated auto parking spaces with ability to add an additional 25 spaces

24 trailer parking spaces

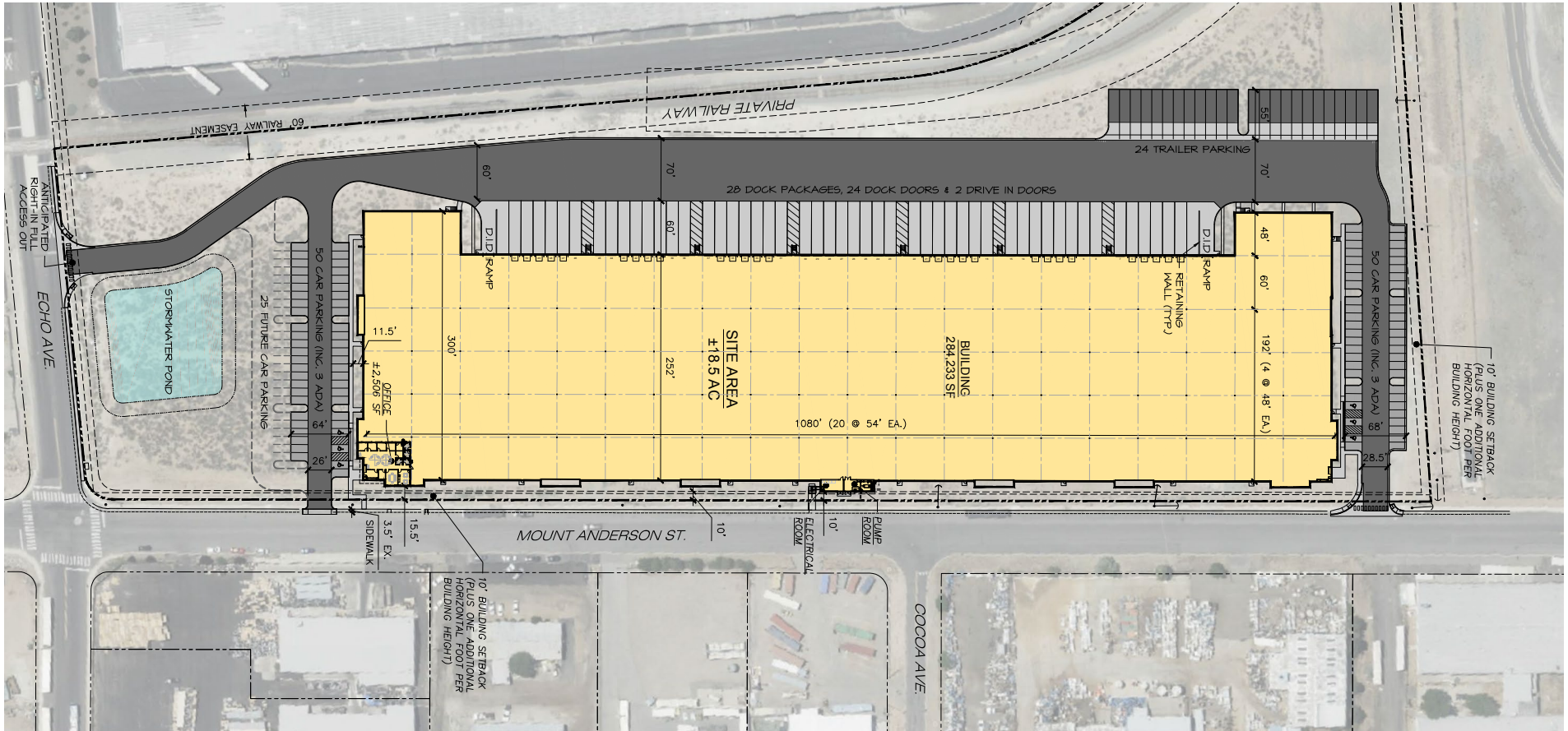
7" reinforced slab

60 mil, single ply TPO roof membrane

1% skylights

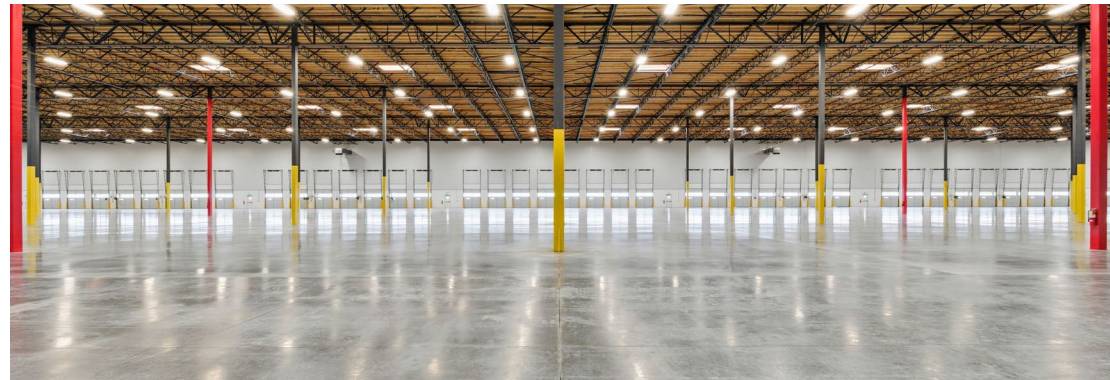


# SITE PLAN

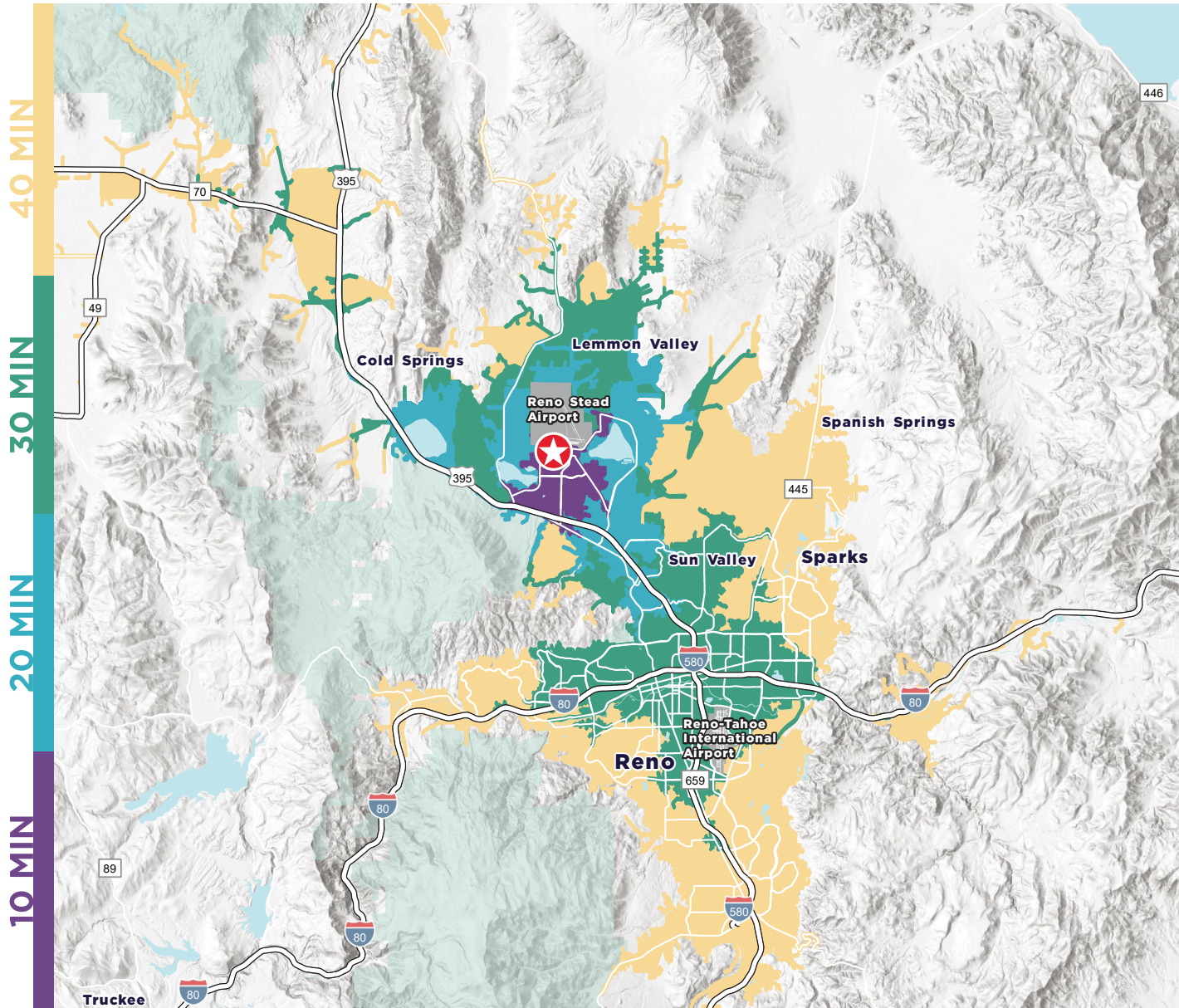


## Available Space

- Total SF: ±284,233 SF, divisible to ±128,496 SF
- Office SF: ±2,506 SF
- Dock-High Doors: 52 vertical lift dock-high doors, 28 of which are complete with vision light, wbumpers, 40,000 lb mechanical dock leveler, dock seal, fans & lights
- Grade-Level Doors: 2 (14' x 16')
- Vertical lift grade-level doors
- Sprinkler Rating: ESFR sprinkler density
- Columns: 54' x 48' (typical) with 60' speed bay
- Clear Height: 36'



# LOCATION



**3 MIN/.09 MI**

RENO/STEAD AIRPORT

**15 MIN/11.1 MI**

I-80

**6 MIN/2.7 MI**

I-395

**18 MIN/12.7 MI**

DOWNTOWN RENO

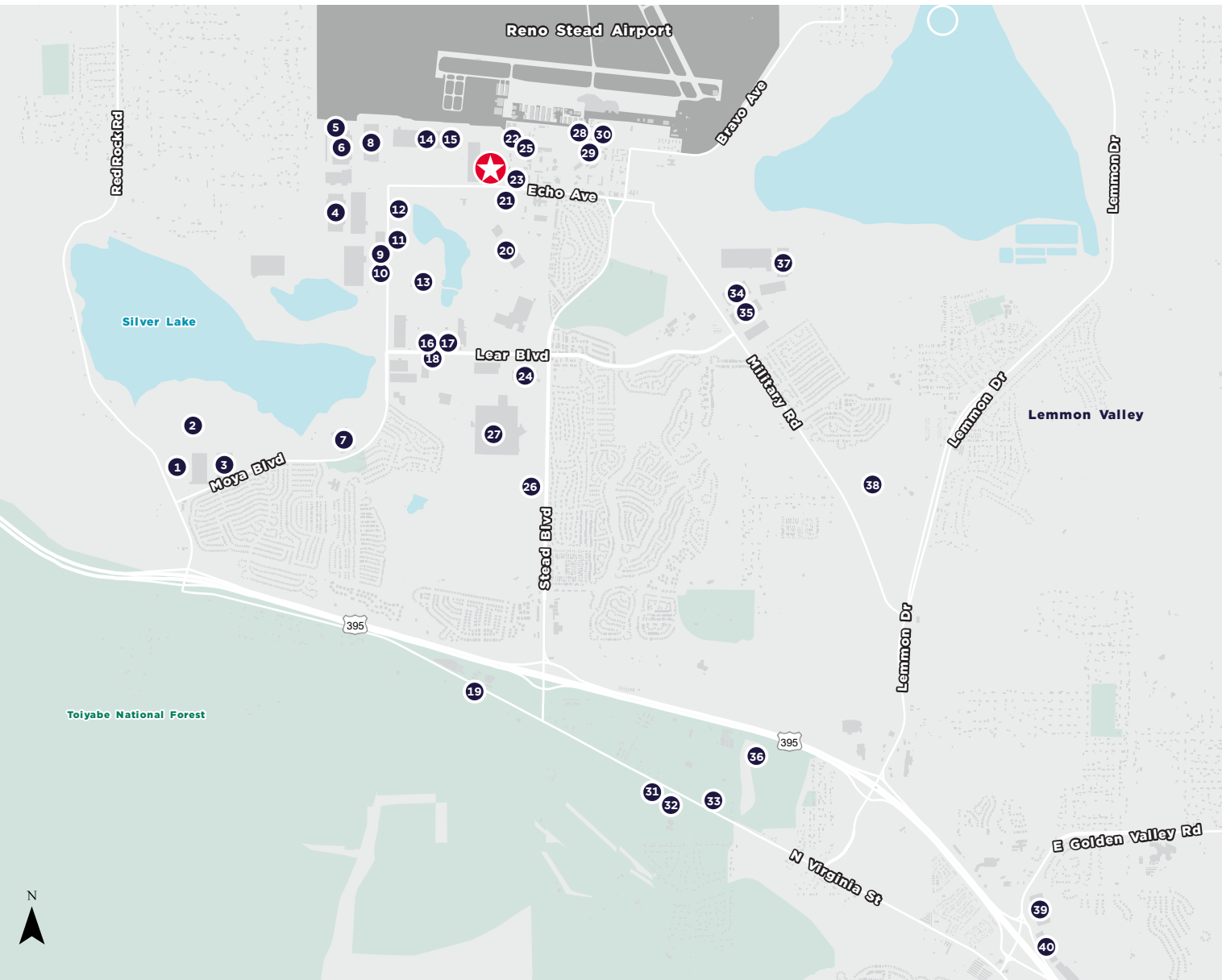
**12 MIN/9.3 MI**

CA BORDER

**20 MIN/13.5 MI**

DOWNTOWN SPARKS

# CORPORATE NEIGHBORS



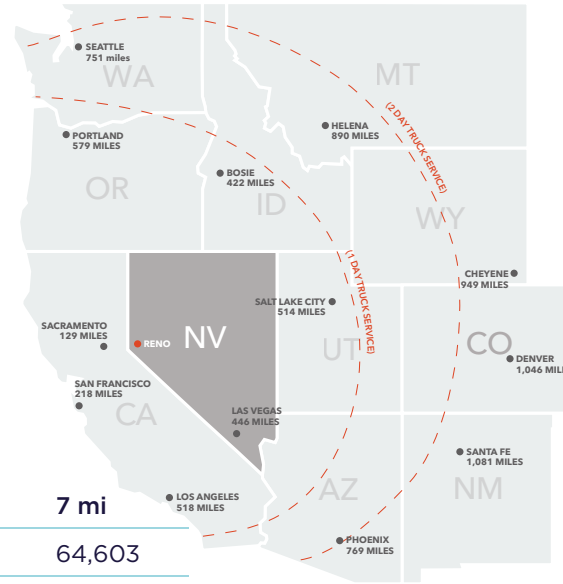
1. Emerson Automation Solutions
2. Petco Distribution Center
3. Hedwin Division
4. Burrows Paper Corporation
5. Fosdick Fulfillment Corp.
6. Legend Valve & Fitting Inc.
7. Sally Beauty Distribution Center
8. GM Customer Care & Aftersales
9. MD Logistics
10. High Quality Organics
11. YRC Logistics
12. HVA LLC
13. HV Manufacturing Co.
14. Pacific Western Timbers
15. Warehouse Service
16. Chevron Chemical Plexco-Spirorlite
17. Performance Pipe Plant
18. CES Machine Products Inc
19. Mobile Mini Solutions
20. A & B Precision Metals Inc.
21. Pallet Depot LLC
22. Itronics Metallurgical Inc.
23. Lefell Co.
24. Cooper B-Line Inc.
25. VDM Metals USA LLC
26. Quad/Graphics Inc.
27. JC Penney Distribution Center
28. Dashtop
29. Palco Industries Inc.
30. WHS Fenestration
31. GBS Enterprises
32. Leatt Brace Corp.
33. Nevada Barricade & Sign Co. Inc.
34. UPS Supply Chain Solutions
35. Volvo Parts North Americas
36. Mary's Gone Crackers, Inc.
37. Hub Group
38. Ernest Packaging
39. Optimas
40. Sullivans Inc.

# AREA OVERVIEW



## TRANSPORTATION

Ground	Miles
Reno-Tahoe Int'l Airport	13.7
Reno-Stead FBO	1.0
UPS Regional	15.7
FEDEX Express	14.9
FEDEX Ground	21.2
FEDEX LTL	14.0



Source: [NVEnergy](#)  
Last updated: 2024

## DEMOGRAPHICS

2024	3 mi	5 mi	7 mi
Population	30,800	44,393	64,603
Households	10,933	15,938	22,719
Avg, HH Incomes	\$96,417	\$98,384	\$103,492
Total Employees	4,197	6,262	9,207

## NEVADA STATE INCENTIVES

- No state, corporate or personal income tax
- No estate tax, no inventory tax, no unitary tax, no franchise tax
- Right-to-work state
- Moderate real estate costs
- Low workers' compensation rates
- State-qualified employee hiring incentive

## HELPFUL LINKS

- **Business Costs**  
<https://www.edawn.org/site-selector/business-relocation-advantages/>
- **Business Incentives**  
<https://goed.nv.gov/programs-incentives/incentives/>
- **Cost of Living**  
[https://www.nvenergy.com/publish/content/dam/nvenergy/brochures\\_arch/about-nvenergy/economic-development/costoflivingred.pdf](https://www.nvenergy.com/publish/content/dam/nvenergy/brochures_arch/about-nvenergy/economic-development/costoflivingred.pdf)
- **Quality of Life**  
<http://edawn.org/live-play/>

## BUSINESS COST COMPARISONS

Tax Comparisons	NV	CA	AZ	UT	ID	OR	WA
State Corporate Income Tax	No	8.84%	4.9%	4.95%	6.925%	6.6%-7.6%	No
Personal Income Tax	No	1%-13.3%	2.59%-4.54%	4.95%	1.125%-6.925%	5%-9.9%	No
Payroll Tax	1.17% > \$50K/Q	0.380% (2019)	No	No	No	0.73%-0.7537%	No
Monthly Property Tax (Based On \$25m Market Value)	\$22,969	\$26,041	\$68,096	\$31,850	\$34,792	\$50,000	\$21,125
Unemployment Tax	0.3%-5.4%	1.5%-6.2%	0.04%-12.76%	0.10%-7.10%	0.26%-5.4%	0.70%-5.4%	0.13%-5.72%
Capital Gains Tax	No	13.3%	4.5%	4.95%	6.93%	9.9%	No

FOR LEASE

# MOUNT ANDERSON AT ECHO

14003 MT ANDERSON STREET, | RENO, NV 89506



FOR MORE INFORMATION, PLEASE CONTACT:

**Mike Nevis, SIOR, CCIM**  
Vice Chairman  
+1 775 470 8855  
mike.nevis@cushwake.com  
Lic. # S.0061759

**Emily Jaenson**  
Industrial Specialist  
+1 847 630 4739  
emily.jaenson@cushwake.com  
Lic. # S.0203962

Proudly owned and developed by:



[cushmanwakefield.com](http://cushmanwakefield.com)

©2026 Cushman & Wakefield. All rights reserved. The information contained in this communication is strictly confidential. This information has been obtained from sources believed to be reliable but has not been verified. NO WARRANTY OR REPRESENTATION, EXPRESS OR IMPLIED, IS MADE AS TO THE CONDITION OF THE PROPERTY (OR PROPERTIES) REFERENCED HEREIN OR AS TO THE ACCURACY OR COMPLETENESS OF THE INFORMATION CONTAINED HEREIN, AND SAME IS SUBMITTED SUBJECT TO ERRORS, OMISSIONS, CHANGE OF PRICE, RENTAL OR OTHER CONDITIONS, WITHDRAWAL WITHOUT NOTICE, AND TO ANY SPECIAL LISTING CONDITIONS IMPOSED BY THE PROPERTY OWNER(S). ANY PROJECTIONS, OPINIONS OR ESTIMATES ARE SUBJECT TO UNCERTAINTY AND DO NOT SIGNIFY CURRENT OR FUTURE PROPERTY PERFORMANCE. COE-PM-West-04.23.2026