



AVAILABLE

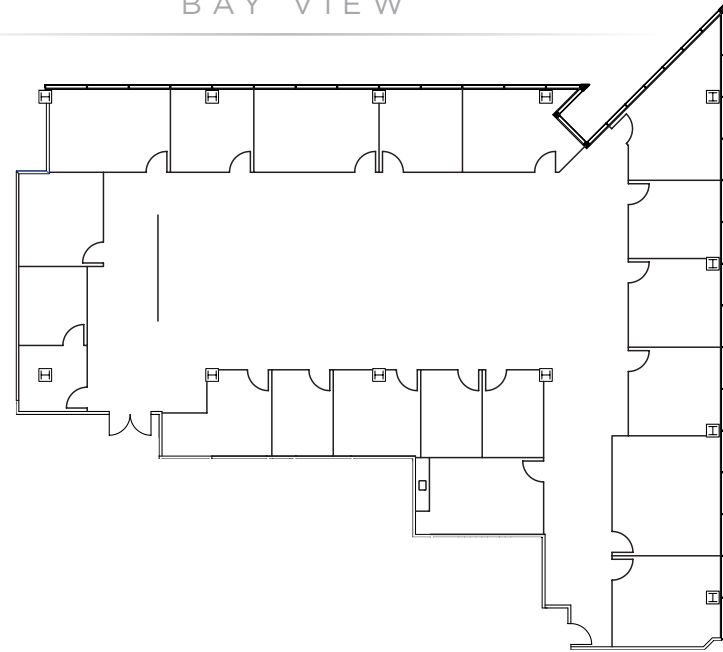
Suite 520

±7,683 RSF

- Downtown San Francisco and Panoramic Bay Views
- 15 private offices
- 4 conference rooms
- Kitchen
- Open Office
- Market Ready Finishes

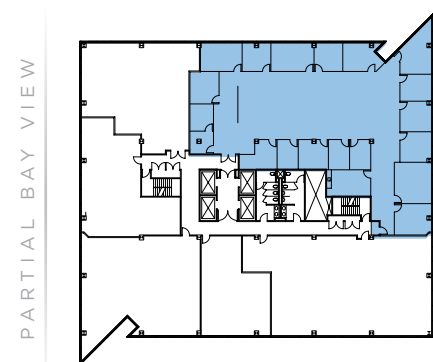


BAY VIEW



PARTIAL BAY VIEW

BAY VIEW



PARTIAL BAY VIEW

PARTIAL BAY VIEW

MONTARA MOUNTAIN VIEW

Gary Boitano / Managing Director / T+ 1 650 401 2122 / gary.boitano@cushwake.com

Clarke Funkhouser / Senior Managing Director / T+ 1 650 619 5579 / clarke.funkhouser@jll.com



CUSHMAN & WAKEFIELD



WOODSTOCK