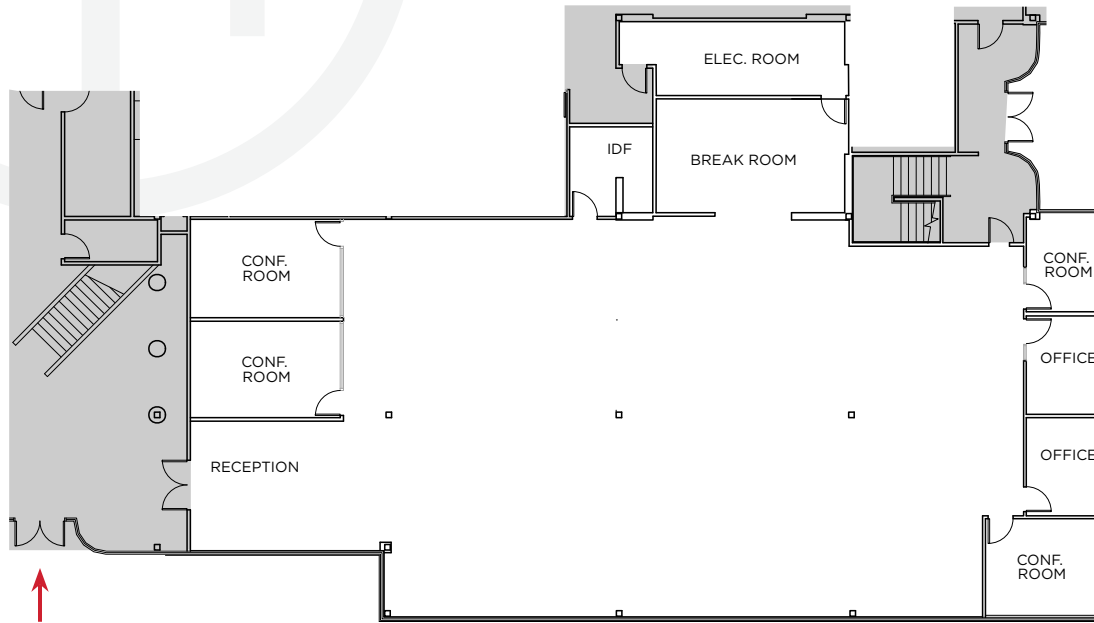


## BUILDING 4300 - SUITE 100

~6,727 RSF

\*HYPOTHETICAL FURNITURE PLAN



### SUITE HIGHLIGHTS

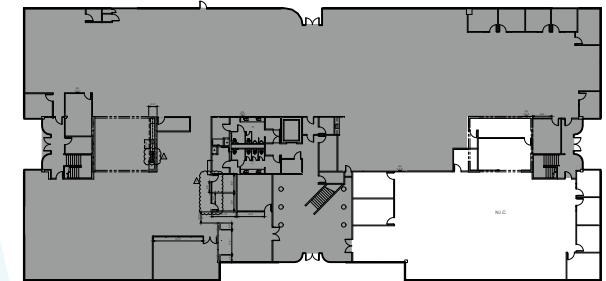
2 Private Offices	Break Room
4 Conference Rooms	2 Breakout Spaces
Storage Room	Reception

**TOTAL HEAD COUNT: 45**

### SITE PLAN:



### KEY PLAN:



**BEN PAUL** | Vice Chairman | +1 650 401 2123 | ben.paul@cushwake.com | LIC #0121087

**GARY BOITANO** | Managing Director | +1 650 401 2122 | gary.boitano@cushwake.com | LIC #01902693

**DAVID HIEBERT** | Vice Chairman | +1 650 320 0250 | david.hiebert@cushwake.com | LIC #01189320