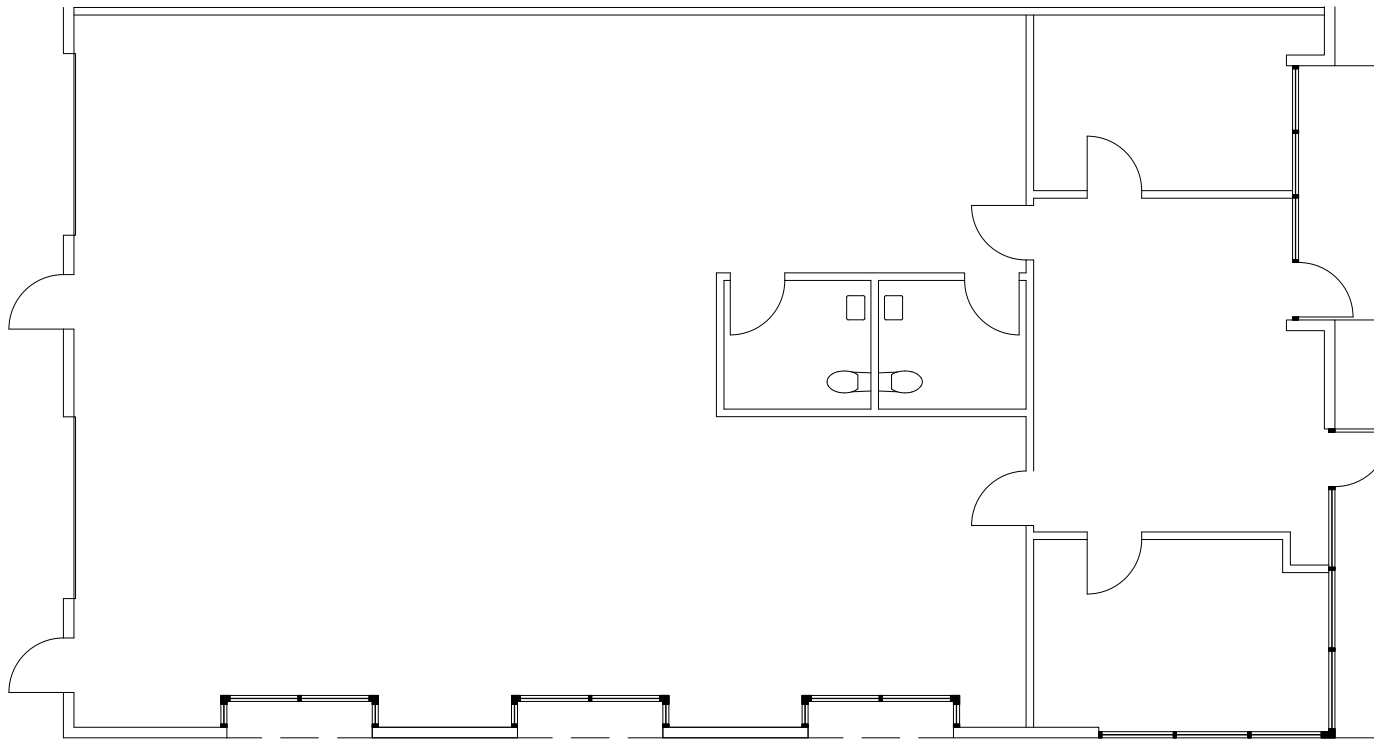


# 10 HAMMOND



SUITE 300/301

# 2,842 RSF

HAMMONDBUSINESSPARK.COM

## HAMMOND BUSINESS PARK

FOR MORE INFORMATION,  
PLEASE CONTACT:



### JOHN GRIFFIN

Executive Managing Director  
+1 949 372 4902  
John.griffin@cushwake.com  
Lic. #01026231

### MAX WANG

Senior Associate  
+1 949 372 4903  
Max.wang@cushwake.com  
Lic. #01253546

### THOMAS GRIFFIN

Associate  
+1 949 930 4380  
Thomas.griffin@cushwake.com  
Lic. #02260734



### TIM WALKER

Senior Vice President  
+1 949 230 7649  
timwalker@lee-associates.com  
Lic. #01218076

### PITZER GILLS

Associate  
+1 727 366 5825  
pgills@lee-associates.com  
Lic. #02254884

A QUALITY DEVELOPMENT BY:

